

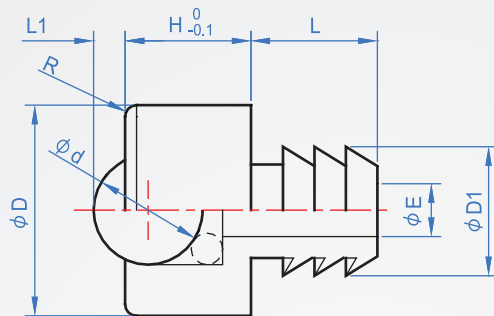
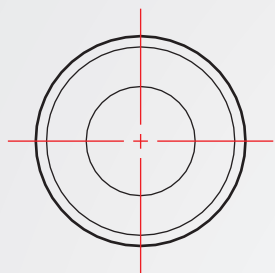
壓入山型

BR868 全POM

本體

主珠

輔助珠

樹脂
(POM)樹脂
(POM)SUS440C
HRC55~

How to order

BR868 - 5
| TYPE No.

1

單位：mm

No.	D	D1	L	L1	H	d	R	E	尖狀數	壓入穴荷重 (N)	球的耐荷重 (N)
5	8	5.1	5	1.5	5	4.76	0.5	1.5	3	60	2
6	10	6.1	6	1.7	6	5.56		2.5			4
8	13	8.1	8	2.8	8	8.73		3			80
10	17	10.1	10	3.5	10	10.32	1	3.5	4	100	11

kgf=N×0.101972

Che Na

(FAX) (02)2688-3177

info@chena.com.tw

(02)2688-3188
(02)2688-3881~3

新北市樹林區光榮街21號