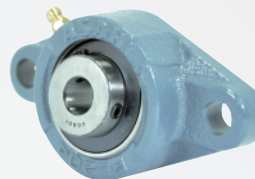
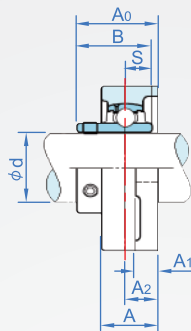
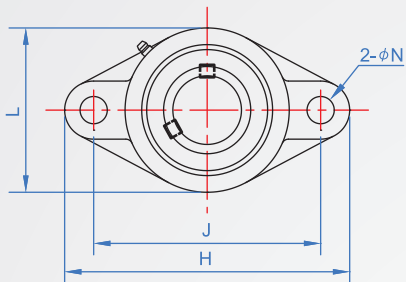


菱形
RN507 鑄鐵



How to order ▶

RN507 - 12
TYPE 內徑

本體	軸承	止附螺絲	油嘴	使用溫度
鑄鐵	SUJ2	SCM435	Cu銅	-10°C~80°C

軸承NBR橡膠密封

單位: mm

d	主要尺寸 (mm)										適用螺絲	基本額定荷重(kN)		質量(g)
	H	L	A	J	N	A1	A2	A0	B	S		Cr	Cor	
12	113	60	25.5	90	12	12	15	33.3	31	12.7	M10	13.1	6.35	500
15	113	60	25.5	90	12	12	15	33.3	31	12.7	M10	13.1	6.35	480
17	113	60	25.5	90	12	12	15	33.3	31	12.7	M10	13.1	6.34	470
20	113	60	25.5	90	12	12	15	33.3	31	12.7	M10	13.1	6.34	450
25	130	68	27	99	16	14	16	35.7	34.1	14.3	M14	14.3	7.3	630
30	148	80	31	117	16	14	18	40.2	38.1	15.9	M14	20	10.5	960
35	161	90	34	130	16	16	19	44.4	35	17.5	M14	26.4	14.3	1200
40	175	100	36	144	16	16	21	51.2	40	19	M14	29.9	16.5	1600
45	188	108	38	148	19	18	22	52.2	45	19	M16	33.5	18.9	1900
50	197	105	40	157	19	18	22	54.6	50	19	M16	36	21.1	2200
55	224	130	43	184	19	20	25	58.4	55	22.2	M16	44	26.7	3200
60	250	140	48	202	23	20	29	68.7	60	25.4	M20	53.5	33	4100

1kgf = 9.8N