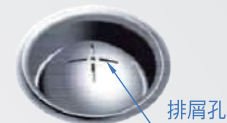
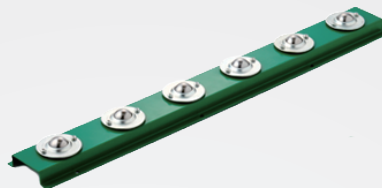


滾輪組件

BR802

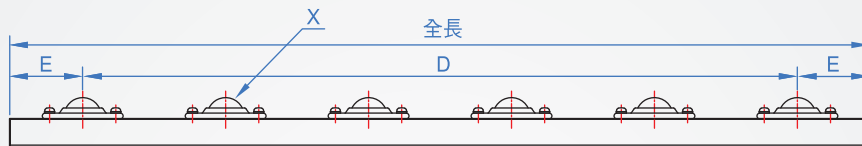
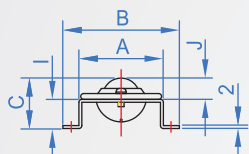
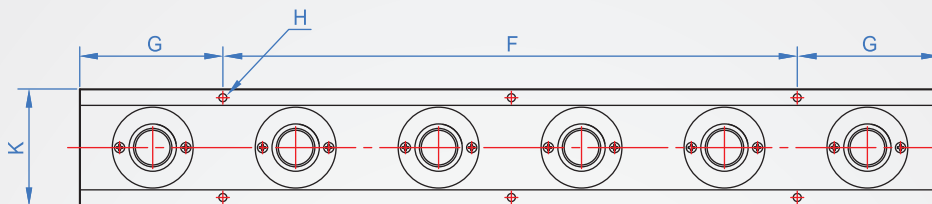


※萬向球滾動變成不順暢之環境中，粉塵會從裂縫排出，大小滾珠得以保持順暢滾動。

碟形滾珠：鋼製
支架：鋼(綠色烤漆)

How to order ▶▶

BR802 - FU-9
TYPE Code



單位 :mm

代碼 Code	A	B	C	D	E	F	G	H	I	J	全長	K	X(使用數量)	自重(kg)
FU-6	58	80	34.6	100pitch x 5=500	50	200pitch x 2=400	100	6-Ø5.5	20	14.6	600	68.5	C-8L-SL4(6個)	1.8
FU-9				100pitch x 8=800		200pitch x 4=800	50	10-Ø5.5			900		C-8L-SL4(9個)	2.6
FU-12				100pitch x 11=1100		200pitch x 5=1000	100	12-Ø5.5			1200		C-8L-SL4(12個)	3.5
FU-18				100pitch x 17=1700		200pitch x 8=1600	18-Ø5.5	1800			C-8L-SL4(18個)		5.2	
FU-9-75				75pitch x 11=825	200pitch x 4=800	50	10-Ø5.5	900			C-8L-SL4(12個)		3	
FU-18-75				75pitch x 23=1725	200pitch x 8=1600	100	18-Ø5.5	1800			C-8L-SL4(24個)		6	

碟形主珠可選擇SUS或尼龍珠，請參考BR810系列8L型。