

吊環
WA760



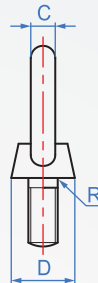
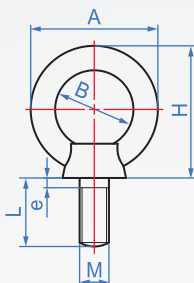
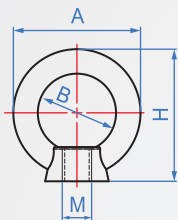
A : 內螺紋吊環



B : 外螺紋吊環



配件另購：
螺帽WA774



How to order



單位: mm

M	Pitch 粗牙	A	B	C	D	h	外螺牙				螺帽WA774			安全荷重 (kg)	破斷荷重 (kg)
							H	e	R	L	b	T	(a)		
M6	1.0	26	16	5	13	31	27	2	0.8	14	10	5	11.5	275	1100
M8	1.25	32	20	6.3	16	16	34	3	1	15	13	6.5	15	325	1300
M10	1.5	41	25	8	20	20	42	4	1.2	18	17	8	19.6	650	2600
M12	1.75	50	30	10	25	25	52	5	1.4	22	19	10	21.9	875	3500
M16	2.0	60	35	12.5	30	30	60	5	1.6	26	24	13	27.7	2000	8000
M20	2.5	72	40	16.5	35	35	72	6	2	30	30	16	34.6	2625	10500

版權所有
製必究