

Chain fastener

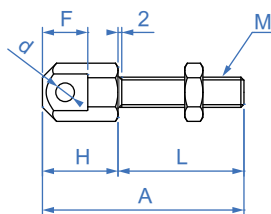
NX

Tension adjusting lever

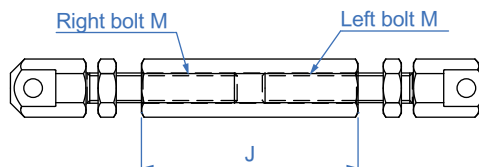


R : Right bolt

L : Left bolt



SET : Assemblag



Type	Material	Color	Hardness
Two-end bolt	SCM435	Black oxide	HRC35~
Adjusting lever			-

* Accessories : Fastening nuts

How to order

1 2
 NX - R - 40
 TYPE Kind No.

Kind	No.	NASI Chain	A	B	d	F	G	H	L	M	J	Quality (g)	
												Single bolt	Assemblage
R (Right bolt)	25	25B	28	7	2.4	6.5	4.8	10	18	M4	33	9	28
	35	35B	40	10	3.7	10.5	7.4	15	25	M6	43	13	44
L (Left bolt)	40	40B	53	13	4	13	11.2	20	33	M8	55	30	105
	50	50B	65	17	5.2	16.5	13.8	24	41	M10	67	60	215

Matters needing attention :

- When the tension adjustment rod is used in a suspension device, no one should stay underneath it.
- The tension adjustment rod is a consumable material and needs to be inspected and replaced regularly.
- If there is any safety concern at the joint between the tension adjustment rod and the chain, please install a safety device.

Advantages:

- The tension adjustment lever can use the screw threads at both ends to adjust the tension.

