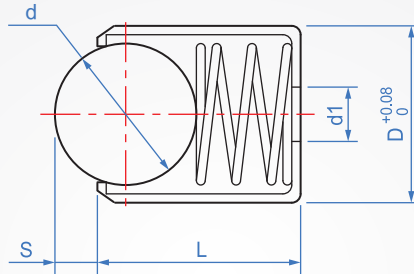
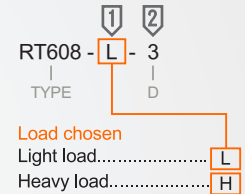


Embedded type  
**RT608**  
Short



Ontology	Bead	Spring
SUS303	SUS	SUS

How to order



Load	D	L		S	d	d1	Elasticity (N)			
		Light load	Heavy load				Light load <b>L</b>		Heavy load <b>H</b>	
		<b>L</b>	<b>H</b>				min.	max.	min.	max.
<b>L</b> (Light load)	3	4	-	0.6	2	1	0.74	0.98	-	-
	4	5	6.5	0.8	3	1.5	0.65	5.6	3.1	8.7
	5	6	8	1.5	4	2	2.8	6.3	5.1	13.5
	6	7	9	1.6	5	2.5	2.95	9.6	5.3	16.5
<b>H</b> (Heavy load)	8	9	12	1.9	6.35	3	6.5	11.7	8	28
	10	13	14.5	2.4	8		9	15	13.5	30.5
	12	16	-	3.3	10		13	25	-	-

Copyright © CHENA INDUSTRIAL CO.,LTD ALL RIGHTS RESERVED.