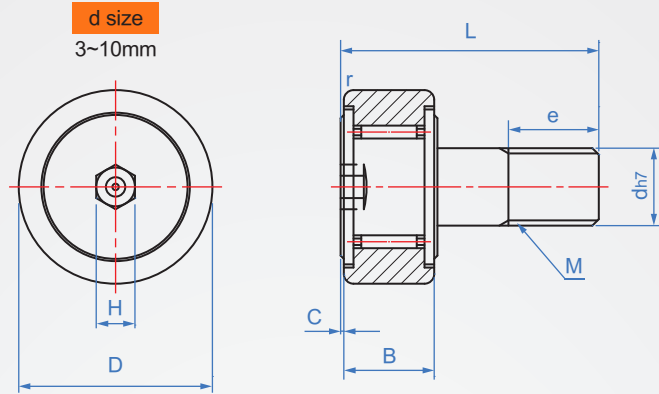


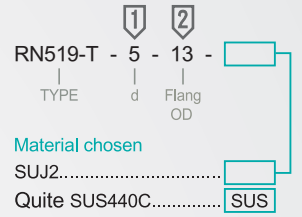
Flange side hexagon
RN519-T
Flat type



Material	Operating temperature
SUJ2	Below 80 ° C
SUS440C	

※Full range of sealed

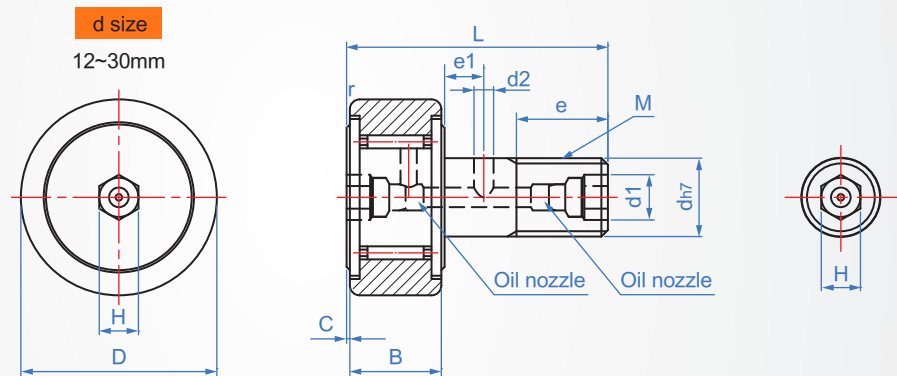
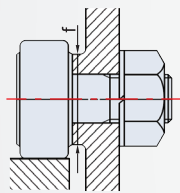
How to order



1		2		Unit :mm													
d	h7	D	tolerance	M x Pitch	B	C	L	e	H	r	Mounting min. f	Max. allowable load K N	Track load capacity K N	Basic rated load C K N	Cor K N	The max. number of rotations rpm	weight (g)
3	+0 -0.010	10	+0 -0.008	M3 x 0.5	7	0.5	17	5	2(1.5)	0.3	6.8	0.36	1.37	1.47	1.18	32900	4.5
4	+0 -0.012	12		M4 x 0.7	8		20	6	2.5(2)		8.6	0.78	1.76	2.06	2.05	25900	7.5
5		13		M5 x 0.8	9		23	7.5	3(2.5)		9.7	1.42	2.25	3.14	2.77	20300	10.5
6	+0 -0.015	16	M6 x 1.0	11	0.6	28	9	3	0.5	11	2.11	3.43	3.59	3.58	17500	18.5	
8		19	M8 x 1.25			32	11			13	4.73	4.02	4.17	4.65	14000	28.5	
10	+0 -0.015	22	+0 -0.009	M10 x 1.25	12	0.6	36	13	5	1	15	5.81	4.7	5.33	6.78	11900	45
		26											5.49				60

1N≒0.102kgf

Flat type installation example



1		2		Unit :mm																
d	h7	D	tolerance	M x Pitch	B	C	L	d1	d2	e	e1	H	r	Mounting min. f	Max. allowable load K N	Track load capacity K N	Basic rated load C K N	Cor K N	The max. number of rotations rpm	weight (g)
12	+0 -0.018	30	+0 -0.009	M12 x 1.5	14	0.6	40	6	3	14	6	6	1.5	20	9.37	7.06	7.87	9.79	9800	95
		32	7.45																	105
16	+0 -0.011	35	+0	M16 x 1.5	18	0.6	52	6	3	18	8	6	1.5	24	17.3	11.2	12	18.3	7000	170
18		40	14.4																	14.7
20	+0 -0.013	47	+0 -0.011	M20 x 1.5	24	0.8	66	8	4	22	9	8	1.5	36	32.1	21	20.7	34.8	4900	385
		52														23.2				460
24	+0 -0.021	62	+0 -0.013	M24 x 1.5	29	0.8	80	8	4	25	11	8	1.5	40	49.5	34.2	30.6	53.2	4550	815
		72														39.8				1140
30	+0 -0.015	80	+0 -0.015	M30 x 1.5	35	1	100	8	4	32	15	8	1.5	46	73.7	52.6	45.4	87.6	3500	1870
		85														56				2030
		90														59.3				2220

1N≒0.102kgf

The notices during installation

- ◆ To ensure uniform contact with the outer ring and the mating surface of the cam follower when properly installed actuator must ensure that it is perpendicular to the row direction of the shaft wheel.
- ◆ Mounting parts
Mounting hole chamfering recommendation C0.5
And the diameter of the mounting surface requires a minimum equal to (f) sizes indicated in the table.

Others : (1) Sealless type can provide 7000 ~ 47000/minute high number of rotations;
 (2) Heavy load filled with full roller type d part diameter : 6~30mm
 Max. load 8.5 - 145(KN)