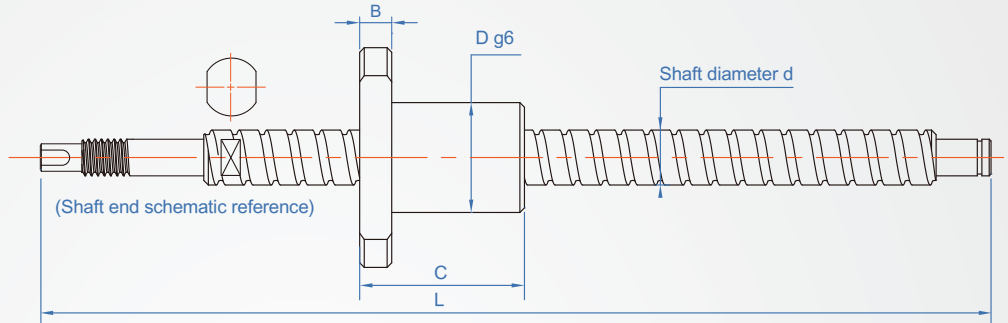
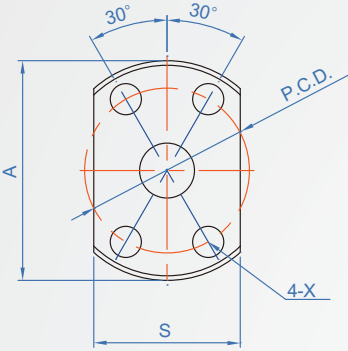


Shaft diameter 6~16
K series
small

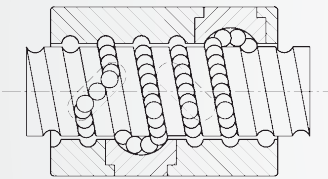


Precision	screw	Shaft hardness		Nuts	
		Material	Hardness	Material	Hardness
C7	Transformation grade	S55C	Tempered Fire (HRC60)	SCM415H	Tempering (HRC60)
C5	Grinding grade				



Inner loop features/construction

The outer diameter of the nut is lighter, suitable for machines with small internal space



Lead accuracy (JIS B 1192) Unit : mm

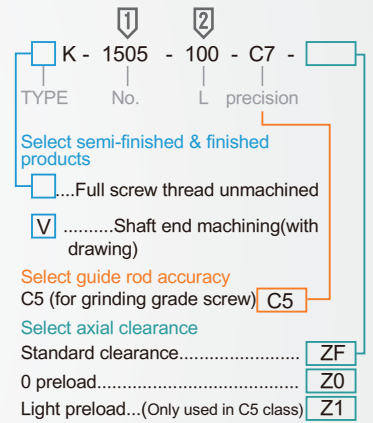
Accuracy level	C7	C10
Cumulative lead time error	±0.05/300	±0.21/300

Tolerance of the accumulated lead error (±Ec) and variation (e) of the base lead for an arbitrary 300mm effective thread

Axial standard clearance Unit : mm

Shaft diameter	Axial clearance(max)
6~12	0.05
14~16	0.10

How to order



No.	Shaft diameter d	d Guide	L Designation 1mm	A	B	C	S	P.C.D	T	X	Ball Diameter	Basic load (kgf)	
												Ca(Move) kN	Ca(Quiet) kN
0601	6	1	80 ~ 300	24	3.5	18	12	16	18	3.4	0.8	111	123
0801	8	1	100~400	27	4	20	14	18	21			1.2	215
0802		2		26		16	20	23					
08025	10	2.5	100~600	29	5	28	18	22	27	4.5	1.2	240	302
1002		2		35		5	28	18	22				
1004	12	4	100~800	46	10	35	26	28	36	5.5	2.38	645	693
1202		4		48		6	35	28	30				
1205	14	5	120~1000	48	6	35	28	30	39	5.5	1.2	283	440
1402		2		40		6	28	21	26				
1602	16	2	120~1200	43	10	32	25	29	35	5.5	1.2	300	503