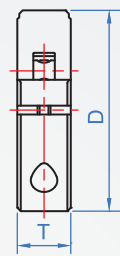
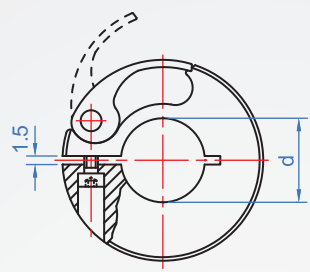


## Quick release SC478

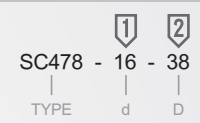
※Characteristics :

- ◆ Quick adjustment without tools, aluminum design provides low inertia values. Good mobility, without damaging the surface of the shaft, with high clamping force.
- ◆ These collars can be used not only as a stop, but also to secure or trigger other components, such as end limit switches. °

Ontology	Lever
Aluminum alloy (Black anode)	Aluminum alloy (Golden anode treatment)



How to order



1		2		unit : mm	
d	D	T	Locking force N · m	Axial load N	
6 、 8	38	10	0.5	130	
10				150	
12				160	
14				180	
15				220	
16				260	
20	50	13	0.7	310	
25				400	
28				430	
30				450	
32	75	15	1.5	460	
35				480	
38				530	

※建議軸徑公差 h8 °

Copyright © CHENA INDUSTRIAL CO.,LTD ALL RIGHTS RESERVED.