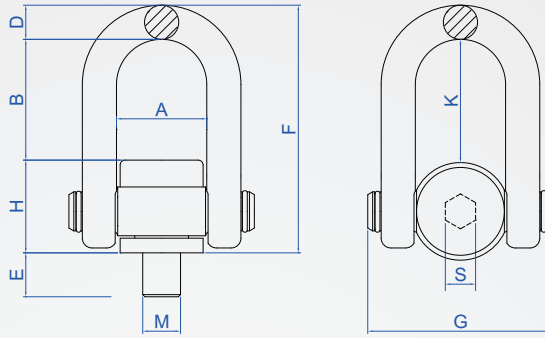


Rings - Imperial YA769

Lifting and rotating



Part	Material
Rings	Forged alloy steel
Bolt	Alloy steel

How to order

YA769 - M12
TYPE M

limit load Tons	Metric Coarse Teeth		American Coarse Teeth		*E	S	A	H	F	D	J	G	B	Tightening torque N · m	quality (kg)	
	Pitch	UNC														
0.5	M8	1.25	5/16"	18	12									30		
0.7	M10	1.5	3/8"	16	16									60		
1	M12	1.75	7/16"	14	18	8	37	38	101.5	14	50.5	76	49.5	100	0.8	
1.5	M14	2	1/2"	13	21									120		
2	M16	2	5/8"	11	24									150		
2.5	M18		—	—										200	1.9	
3	M20	2.5	3/4"	10	40	12	54	48	145	20	73	105	77	250	2	
	M22		7/8"	9										250	2.1	
4.5	M24	3	1"	8										400	2.5	
5	M27	3	—	—	40									450		
6	—	—	1-1/8"	7	45									500	5.5	
7.3	M30	3.5	—	—		54								800		
8	M33		1-1/4"	7	50									900		
9	—	—	1-3/8"	6	54	17	73	68	201.5	30	98.5	149	103.5	900		
10	M36	4	—	—										58		
12.5	M39		1-1/2"	6										1200		
15	M42	4.5	—	—	63									1500	6	
16	M45		1-3/4"	5		70								1800		
20	M48-A	5	—	—										101.5	2000	6.5
20	M48-B	5	2"	4.5	68									2000	11.5	
	M52		—	—		249										
25	M56	5.5	2-1/4"	4.5	78	19	93	84	253	36	120	182	125	2100	12	
	M60		—	—										2200	13	
32	M64	6	2-1/2"	4	90											

* E size thread length, can be customized.

※ Notice

- Ring body can be rotated with the direction of the force to adjust the force angle.
- Load that can be lifted is different in different direction of force, but the safety factor is guaranteed to be 4 times.
- Thread specifications are complete, and the rated load range is wide. The thread size can be customized according to customer requirements.
- 100% Qualified by 6g Go and Stop Gauge, suitable for precision threaded holes.
- Threaded hexagon design, the lifting point can be easily installed on the suspended object with a wrench.
- The thread is made of alloy steel 42CrMo by precision forging, the tensile strength σ_b before heat treatment is 1080MPa, and the mechanical properties are improved after quenching and tempering. The rotating base is designed in one piece, forged as a whole, and the strength is higher.

■ Lifting ring load chart

hanging icon											hanging icon
load angle	1	2	1	2	2	2	2	3~4	3~4	3~4	load angle
thread	0°	0°	90°	90°	0°~45°	45°~60°	asymmetrical	0°~45°	45°~60°	asymmetrical	thread
M	load limit Tons										INCH
M8	0.5	1	0.5	1	0.7	0.5	0.5	1.1	0.8	0.5	5/16"
M10	0.7	1.4	0.7	1.4	1	0.7	0.7	1.5	1.1	0.7	3/8"
M12	1	2	1	2	1.4	1	1	2.1	1.5	1	7/16"
M14	1.5	3	1.5	3	2.1	1.5	1.5	3.15	2.3	1.5	1/2"
M16	2	4	2	4	2.8	2	2	4.2	3	2	5/8"
M18	2.5	5	2.5	5	3.5	2.5	2.5	5.25	3.75	2.5	—
M20	3	6	3	6	4.2	3	3	6.3	4.5	3	3/4"
M22	3	6	3	6	4.2	3	3	6.3	4.5	3	7/8"
M24	4.5	9	4.5	9	6.3	4.5	4.5	9.45	6.8	4.5	1"
M27	5	10	5	10	7	5	5	10.5	7.5	5	—
—	6	12	6	12	8.4	6	6	12.6	9	6	1-1/8"
M30	7.3	14.6	7.3	14.6	10.2	7.3	7.3	15.3	11	7.3	—
M33	8	16	8	16	11.2	8	8	16.8	12	8	1-1/4"
—	9	18	9	18	12.6	9	9	18.9	13.5	9	1-3/8"
M36	10	20	10	20	14	10	10	21	15	10	—
M39	10	20	10	20	14	10	10	21	15	10	1-1/2"
M42	12.5	25	12.5	25	17.5	12.5	12.5	26.3	18.8	12.5	—
M45	15	30	15	30	21	15	15	31.5	22.5	15	1-3/4"
M48-A	16	32	16	32	22.4	16	16	33.5	24	16	—
M48-B	20	40	20	40	28	20	20	42	30	20	2"
M52	20	40	20	40	28	20	20	42	30	20	—
M56	25	50	25	50	35	25	25	53	37.5	25	2-1/4"
M60	25	50	25	50	35	25	25	52.5	37.5	25	—
M64	32	64	32	64	45	32	32	67	48	32	2-1/2"

Copyright © CHENA INDUSTRIAL CO., LTD ALL RIGHTS RESERVED.