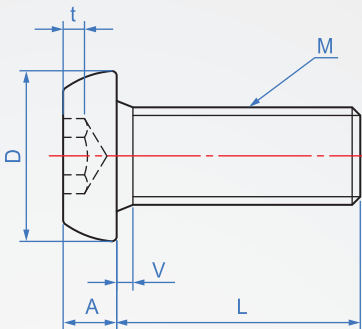
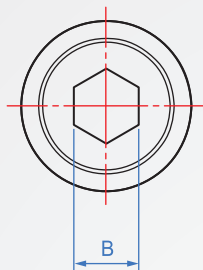


半圓頭內六角螺絲

WA714



材質	硬度	強度區分
SCM435 (染黑)	34~44HRC	10.9
SUS304	-	A2

How to order

WA714 - M3 - 5 -

TYPE 螺紋 長度

選擇材質

SCM435.....

SUS304.....SUS

版權所有製必究

1

2

單位:mm

M	齒距 Pitch	L												D	A	B	t (min.)	V (max.)		
M2	0.4	4	5	6	8	10	12								3.5	1.3	1.3	0.6	0.6	
M2.5	0.45		5	6	8	10	12								4.5	1.5	1.5	0.8	0.8	
M3	0.5		5	6	8	10	12	15	16	20	25				5.7	1.65	2	1.04	1	
M4	0.7		5	6	8	10	12	15	16	20	25	30	40		7.6	2.2	2.5	1.3	1.4	
M5	0.8				8	10	12	15	16	20	25	30	40		9.5	2.75	3	1.56	1.6	
M6	1.0				8	10	12	15	16	20	25	30	40	50	10.5	3.3	4	2.08	2	
M8	1.25					10	12	15	16	20	25	30	40	50	60	14	4.4	5	2.6	2.5
M10	1.5						12	15	16	20	25	30	40	50	60	17.5	5.5	6	3.12	3