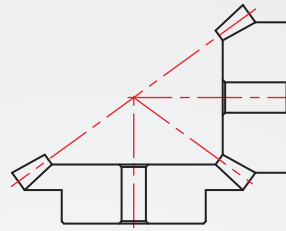
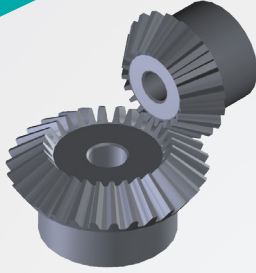


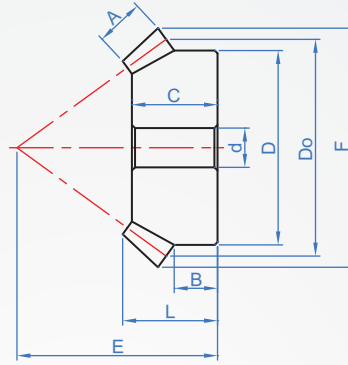
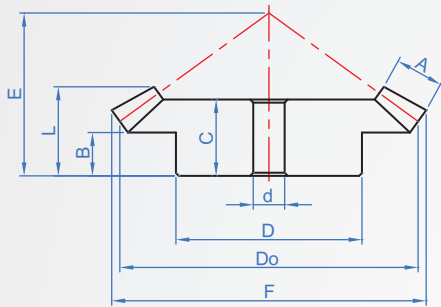
Pressure angle 20°

BG321

Tooth ratio 1:1.5



gear ratio 1:1.5



Material	Finish
S45C	-
	Dye black
	Electroless nickel

How to order

BG321 - M1.5 - 20 - N8 - TB

1 Modulus
2 Number of teeth
3 Hole diameter

Select surface treatment

S45C..... T

S45C+Dye black..... TB

S45C+Electroless nickel..... TN

D path change can be specified

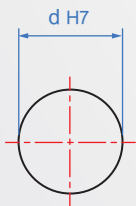
Example :
original D path 25, change 20

unit : mm

Modulus	Number of teeth	Minimum aperture d	gear ratio	A	B	C	D	Do	Number of teeth	E	F	L
M1.5	20	6~	3020	9	11.28	19.77	25	30	20	35.45	32.50	21
	30	10~			13	21.17	35	45	30	32.18	46.66	23
M2	20	10~	3020	12	13.5	24.38	34	40	20	45.28	43.33	26
	30	12~				23.55	45	60	30	38.23	62.22	
M2.5	20	12~	3020	17	16.5	32.10	42	50	20	56.49	54.16	34
	30	15~				31.15	60	75	30	48.27	77.77	
M3	20	15~	3020	21	24	43.76	50	60	20	72.51	64.99	46
	30	18~				24.5	41.64	65	90	30	61.82	93.33

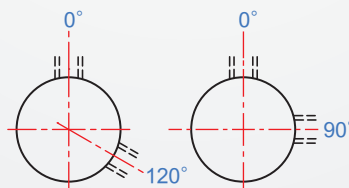
※Please note: It is not allowed to purchase in one piece. Because the combination angle with other companies may cause the teeth to be unable to bite, it must be ordered in sets.

H Round hole



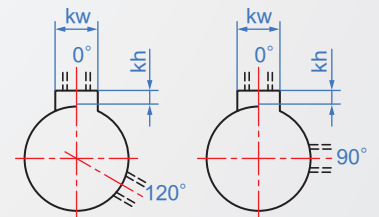
Round hole + tapping

P (120°) KP (90°)



Keyway + tapping

N (120°) KN (90°)



New JIS_B_1301

Shaft aperture	kw(Js9)	kh	Tapping
8~10	3	1.4	M4
NK10	4	1.8	
11~12	4	1.8	M5
13~17	5	2.3	
18~22	6	2.8	M6
23~30	8	3.3	

Select the type of gear

The speed is not high, and the spur gear can be used as the bevel gear. When the speed is high, it is necessary to use a bevel gear or a bevel gear with a higher precision.

Shaft aperture	Tapping
4~5	M3
6~12	M4
13~17	M5
18~30	M6
31~44	M8