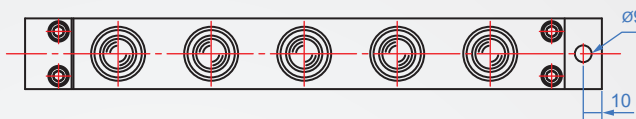


Air floating type die lifter

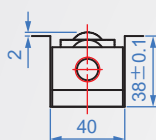
BS803

3836 type

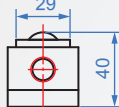
Body material	Finish	Ball material	Ball hardness
Steel	Dye black	SUJ2	HRC60~



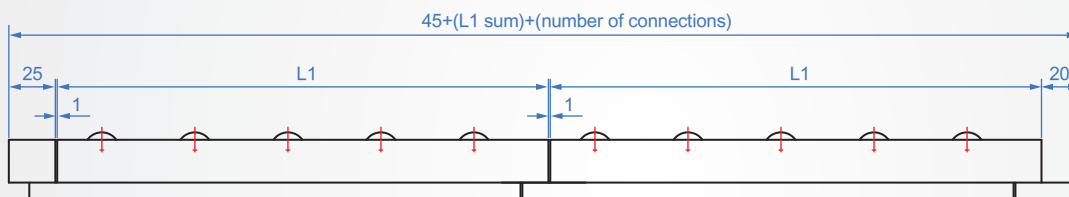
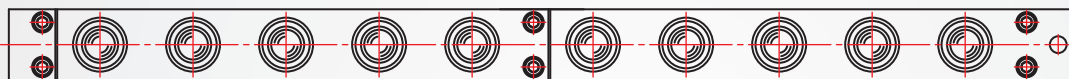
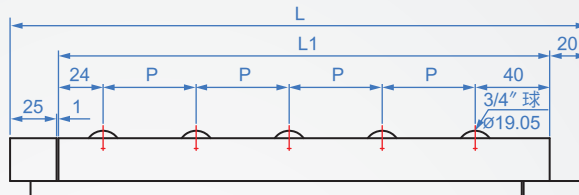
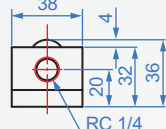
Angle groove size



Rise



Side view



How to order

BS803 - 2
 TYPE Number of balls

unit:mm

Relationship between air pressure and load capacity kN(kgf)

Number of balls	L	L1	P	Relationship between air pressure and load capacity kN(kgf)						Weight (kg)
				A AFU			A cylinder			
				Working pressure Mpa(kgf/cm ²)			Working pressure Mpa(kgf/cm ²)			
				0.40(4.1)	0.50(5.1)	0.60(6.1)	0.40(4.1)	0.50(5.1)	0.60(6.1)	
1	110	64	-	0.24(24.5)	0.31(31.6)	0.39(39.8)				0.8
2	160	114		0.48(48.9)	0.62(63.2)	0.78(79.5)				1.2
3	210	164		0.72(73.4)	0.93(94.8)	1.17(119.3)				1.7
4	260	214		0.96(97.9)	1.24(126.4)	1.56(159.1)				2.1
5	310	264		1.20(122.4)	1.55(158.1)	1.95(198.8)				2.5
6	360	314		1.44(146.8)	1.86(189.7)	2.34(238.6)				3
7	410	364		1.68(171.3)	2.17(221.3)	2.73(278.4)				3.4
8	460	414		1.92(195.8)	2.48(252.9)	3.12(318.2)				3.8
9	510	464		2.16(220.3)	2.79(284.5)	3.51(357.9)				4.3
10	560	514	50	2.40(244.7)	3.10(316.1)	3.90(397.7)	0.24(24.5)	0.31(31.6)	0.39(39.8)	4.7
11	610	564		2.64(269.2)	3.41(347.7)	4.29(437.5)				5.1
12	660	614		2.88(293.7)	3.72(379.3)	4.68(477.2)				5.4
13	710	664		3.12(318.2)	4.03(411.0)	5.07(517.0)				6
14	760	714		3.36(342.6)	4.34(442.6)	5.46(556.8)				6.4
15	810	764		3.60(367.1)	4.65(474.2)	5.85(596.5)				6.8
16	860	814		3.84(391.6)	4.96(505.8)	6.24(636.3)				7.3
17	910	864		4.08(416.0)	5.27(537.4)	6.63(676.1)				7.7
18	960	914		4.32(440.5)	5.58(569.0)	7.02(715.8)				8.1