

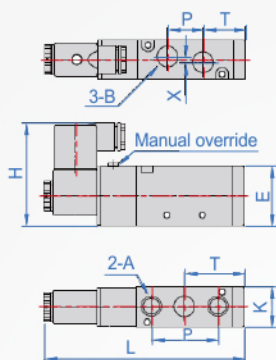
5/2 way
AT192

Material of body	Operating pressure	Proof pressure	Temperature °C	Activating time	Protection
Aluminum alloy	0.15~0.8Mpa (21~114psi)	1.5Mpa (215psi)	-20°C~70°C	0.05 sec and below	IP65 (DIN40050)

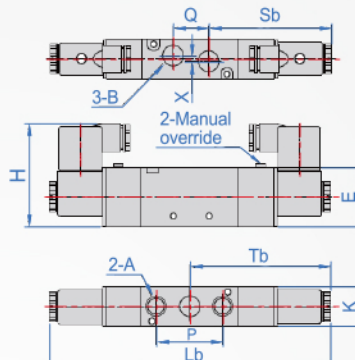
Temperature classification : B Class



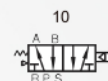
10 : Single solenoid



20 : Double solenoid



※ Symbol



How to order

AT192 - 10 - 20 - AC110V
 TYPE No. Valve Voltage

No.	Valve	Voltage AC/DC	PT	Cv	cycle/sec	L	S	T	Lb	Sb	Tb	A	B	E	H	K	P	Q	X
6	10 (Single solenoid)	AC220V AC110V AC24V	Intake=Exhaust=Vent=PT-1/8"	0.67 (12mm ²)	5	99.4	20.2	28.2	142.4	63.2	71.2	5 hole PT-1/8"	27	55	18	28	16	3	
8			Intake=Exhaust=1/4" (Vent1/8")	0.89 (16mm ²)	5	117	21.2	31.7	171	75	85.4	2- 1/8" 3- 1/4"	35	66.7	22	36	21	3	
10	20 (Double solenoid)	DC24V DC12V	Intake=Exhaust=3/8" (Vent1/4")	1.68 (30mm ²)	4	98.7	28	40	190	83	95	2- 1/4" 3- 3/8"	40	69.2	27	45	24	4	
15			Intake=Exhaust=Vent=PT-1/2"	2.79 (50mm ²)	3	168.4	39	57	222.8	93.4	111.4	5 hole PT-1/2"	50	74.2	34	63	36	4	

※Flow coefficient Cv is calculated using the coefficient,US、JP use Cv,European use Kv,UK use fp.(1Kv=14.28 Cv)
 ※The maximum actuation frequency is in the no-load state.

Note