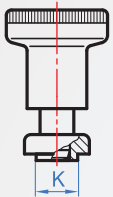


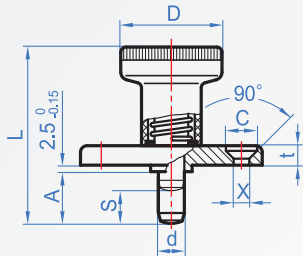
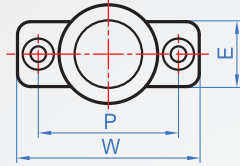
### With fixed flange IP644



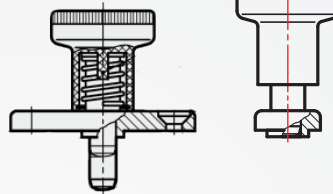
Pull up state



A : Reset type



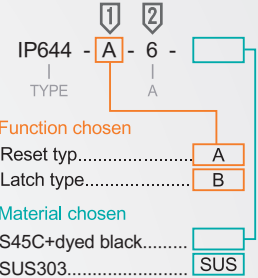
Pull the knob up and  
rotate 90 degrees



B : Latch type

Fixed flange	d Pin	Spring	D knob
Zinc alloy die casting (Trivalent chromium)	S45C+Black oxide HRC50~60	SWP-B	Nylon 6 (Mat Black)
	SUS303	SUS304	

#### How to order



Type	d -0.02 -0.04	A	L	D	S	K +0.02 -0.10	W	P	E	t	C	X	Load (N)		shaft load (N)
													min.	max.	
A Reply type	6	6	37	25	6	10	40	30	18	4.5	8.3	4.3	8.5	22	400
		14	45												
B Card lock type	8	8	44	31	8	12	46	34	20	5.5	10.4	5.3	15.5	28	500
		18	54												

kgf=N×0.102