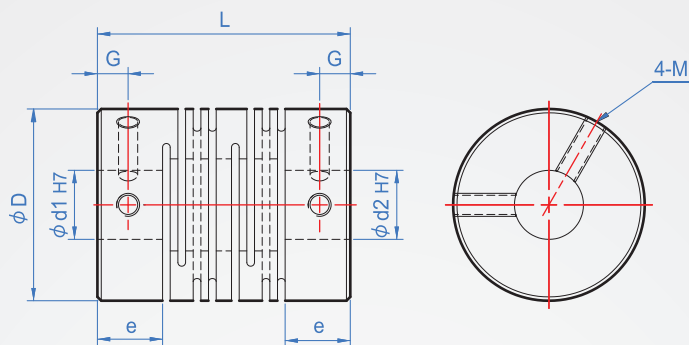


Slit & Set screw coupling

CH403

Long type



Main part	Set screw
A6061 (Clear anodizing)	SCM435 (Black oxide)
SUS303	SUS304

How to order

1
 2
 CH403 - 12 - 3x5 -
TYPE D d1xd2

Material chosen

A6061.....
 SUS303..... SUS

D	Bore designation d1 - d2	L	e	M	G	General torque (N · M)		Maximum torque (N · M)		Maximum number of revolutions (rpm/min)	moment of inertia (kg/m ²)		Allow partiality	Allowable axis Displacement		quality (g)	
						AL	SUS	AL	SUS		AL	SUS		AL	SUS	AL	SUS
						unit:mm											
*8	2 ~ 4	14	3.5	M2	1.7	0.1	-	0.2	-	48000	1.2x10 ⁻⁸	-	0.1	±0.2	-	1.3	-
12	3 ~ 6	18.5	5	M2.5	2.5	0.2	0.3	0.4	0.6	32000	8.3x10 ⁻⁸	2.1x10 ⁻⁷		±0.3	-	4.5	14
16	4 ~ 8	23	6.5	M3	3	0.3	0.5	0.6	1	24000	3.3x10 ⁻⁷	8.1x10 ⁻⁷		±0.4	±0.3	9.5	30
20	5 ~ 10	26	7.5	M4	3.5	0.5	1	1	2	19000	9.0x10 ⁻⁷	2.4x10 ⁻⁶	0.15			±0.4	18
25	5 ~ 12	31	8.5		4	1	2	2	4	15000	2.6x10 ⁻⁶	6.8x10 ⁻⁶		0.2	±0.5		±0.5
32	6 ~ 14	41	12	M5	6	2	3.5	4	7	12000	9.6x10 ⁻⁶	2.6x10 ⁻⁵	±0.5			±0.5	
40	8 ~ 20	56	15		8	5	8	10	16	9600	3.2x10 ⁻⁵	8.7x10 ⁻⁵		0.2	±0.5		±0.5
50	12 ~ 25	71	18	M6	9	10	15	20	30	7700	1.0x10 ⁻⁴	2.7x10 ⁻⁴	0.2			±0.5	
63	15 ~ 35	90	22	M8	11	20	35	40	70	6100	3.2x10 ⁻⁴	8.4x10 ⁻⁴					470

* Part D 8 size is only available in aluminum alloy material.

allow declination : 2°

Copyright © CHENA INDUSTRIAL CO.,LTD ALL Rights Reserved.