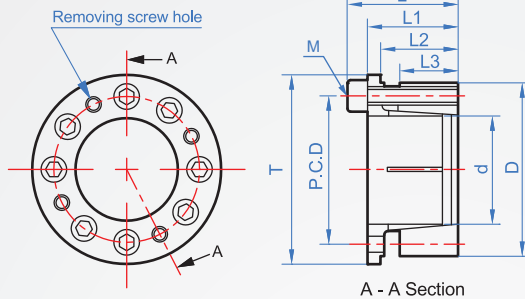


Flang Type LP458

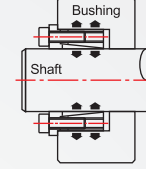
※ Features

- ◆ Tightening the sleeve is to change the surface pressure of the inner and outer diameters of the bolt through the tapered structure. As long as the bolt is locked, the shaft rod and the ring sleeve can be installed and combined easily, and the removal is also simple Solid utensils.
- ◆ The problem of shaking and loosening caused by the key groove processing will not occur, and it can be effectively used on the repetitive rotary mechanism.
- ◆ No backlash, no axial movement, high concentricity <automatic centering>, the standard type is the most widely used fastening sleeve.
- Electroless nickel plating will fill the capillary holes on the surface of the material, and the rust prevention effect is better.

Material	Finish
S45C	Black oxide
	Electroless nickel



Installation example



Recommend shaft diameter tolerance	Shaft surface roughness
h7	1.6a and below (Ra)
Recommend collar inner diameter tolerance	Collar surface roughness
H7	3.2a and below (Ra)

How to order

LP458 - 11 -
TYPE d

Finish chosen

No finish.....
Black oxide..... B
Electroless nickel... TN

unit:mm

d	D	T	P.C.D	L	L1	L2	L3	Fastening bolt			Surface pressure Mpa	Allowable torque (N.m)	Axial thrust N×10 ³	Weight g
								M×L	Count	N.m				
8	21	23.5	15.5	20.5	16.5	14.5	10	M4×12	3	3.9	80	31.4	5.96	30
10	23	25.5	17.5											
11	24	26.5	18.5											
12	26	28.5	20											
14	28	30.5	22	24	20	17.5	12	M4×14	6	3.9	92	73.3	9.9	60
15	29	31.5	23											
16	30	32.5	24											
17	31	33.5	25											
18	32	34.5	26											
19	33	35.5	27											
20	38	42	30.8	29.1	24.1	21.1	15.3	M5×18	8	8.8	130	216	21.6	144
22	40	44	32.8											
24	42	46	34.8	31.6	26.6	23.1	17.3	M5×18	10	8.8	111	363	29.9	180
25	43	47	35.8											
28	46	50	38.8											
30	48	52	40.8											
32	50	54	42.8	37	31	27	20.5	M6×20	12	15.7	114	500	33.3	208
35	57	62	48.8											
38	60	65	51.4											
40	62	67	53.4											
42	64	69	55.4											
45	67	72	58.4											
48	70	75	61.4	38.5	32.5	28	21.5	M6×20	14	15.7	119	441	31.4	195
50	72	77	63.4											
55	77	83	68.4											
60	82	87	73.4											
65	87	92	78.4	39.5	33.5	28.5	22	M6×20	15	15.7	120	1157	51.5	405
70	97	103	86.2											
75	102	108	91.2											
80	107	113	96.2											
85	112	118	101.2	44.1	36.1	31.5	24	M8×25	14	37.3	124	2236	68.5	520
85	112	118	101.2											
85	112	118	101.2											
85	112	118	101.2											
85	112	118	101.2	45.1	37.1	32.1	25	M8×25	15	37.3	129	1402	58.4	460
85	112	118	101.2											
85	112	118	101.2											
85	112	118	101.2											
85	112	118	101.2	45.1	37.1	32.1	25	M8×25	15	37.3	131	2108	68.7	560
85	112	118	101.2											
85	112	118	101.2											
85	112	118	101.2											
85	112	118	101.2	45.1	37.1	32.1	25	M8×25	15	37.3	129	1402	58.4	460
85	112	118	101.2											
85	112	118	101.2											
85	112	118	101.2											
85	112	118	101.2	45.1	37.1	32.1	25	M8×25	15	37.3	131	2108	68.7	560
85	112	118	101.2											
85	112	118	101.2											
85	112	118	101.2											
85	112	118	101.2	45.1	37.1	32.1	25	M8×25	15	37.3	124	2236	68.5	520
85	112	118	101.2											
85	112	118	101.2											
85	112	118	101.2											
85	112	118	101.2	45.1	37.1	32.1	25	M8×25	15	37.3	131	2108	68.7	560
85	112	118	101.2											
85	112	118	101.2											
85	112	118	101.2											
85	112	118	101.2	45.1	37.1	32.1	25	M8×25	15	37.3	124	2236	68.5	520
85	112	118	101.2											
85	112	118	101.2											
85	112	118	101.2											
85	112	118	101.2	45.1	37.1	32.1	25	M8×25	15	37.3	131	2108	68.7	560
85	112	118	101.2											
85	112	118	101.2											
85	112	118	101.2											

Copyright © CHENA INDUSTRIAL CO.,LTD ALL Rights Reserved.