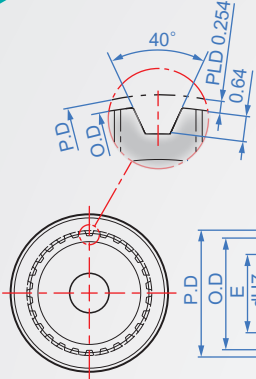


Pitch : 2.032mm

MXL



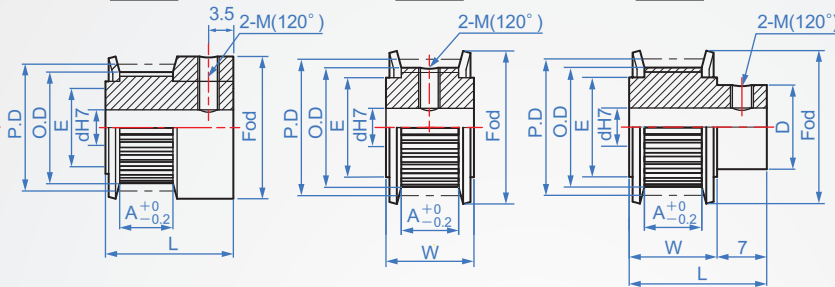
Enlarged view of detail A



KF

AF

BF



Belt width	019 (4.8mm)	025 (6.4mm)	037 (9.5mm)	050 (12.7mm)
Common size	A=6 W=10 L=17	A=7.5 W=11.5 L=18.5	A=11 W=15 L=22	A=14 W=18 L=25

How to order

1 23 - 2 MXL-019 - 3 AF - 4 P4 - 5

1 Number of teeth
 2 TYPE width
 3 Shape
 4 Hole shape

Choose surface treatment

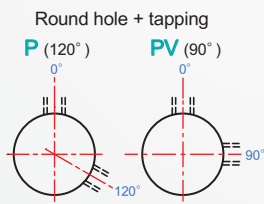
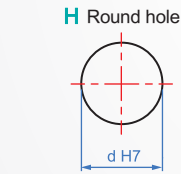
AS.....Clear anode
 AB.....Black anode
 AN.....Electroless nickel
 AK.....Hardened anode

BF shape can specify changes

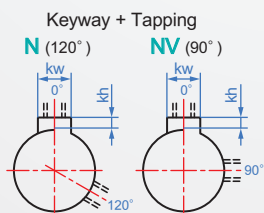
Example: original D path 11, change 9...D9

Material : Aluminum A6061+ anodized.
(If you need iron material, please contact CheNa.)

Unit : mm													
Number of teeth	TYPE width	Shape	Hole shape	Aperture d Processing min.	P.D.	O.D.	Number of teeth	D	E	Fod			
12	MXL-019	AF	Round hole + tapping P (120°)	3~	7.76	7.25	12	-	5	12			
13					8.41	7.9	13						
14					9.06	8.55	14						
15					9.70	9.19	15						
16					10.35	9.84	16						
17					11.00	10.49	17						
18	MXL-025	KF	Refer to the legend below	3~	11.64	11.14	18	9	6.5	13.5			
19					12.29	11.78	19						
20					12.94	12.43	20						
21					13.58	13.08	21						
22					14.23	13.72	22						
23					14.88	14.37	23						
24					15.52	15.02	24				11	13	19
25					16.17	15.66	25						
26					16.82	16.31	26						
27					17.46	16.96	27						
28					18.11	17.6	28						
29					18.74	18.25	29						
30	19.4	18.9	30	12	14.5	22.6							
31	20.05	19.54	31										
32	20.7	20.19	32										
33	21.34	20.84	33										
34	21.99	21.48	34										
35	22.64	22.13	35										
36	MXL-037	BF	Refer to the legend below				3~	23.29	22.78	36	11	13	19
37								23.93	23.42	37			
38								24.58	24.07	38			
39								25.23	24.72	39			
40								25.87	25.36	40			
41								26.52	26.01	41			
42	MXL-050	AF	Refer to the legend below	4~	27.17	26.66	42	12	14.5	22.6			
43					27.81	27.31	43						
44					28.46	27.95	44						
45					29.11	28.6	45						
46					29.75	29.25	46						
47					30.4	29.89	47						
48					31.05	30.54	48						
49					31.69	31.19	49						
50					32.34	31.83	50						



Axis aperture	Tapping
3-5	M3
6-17	M4
18-22	M5



Shaft bore	kw(Js9)	kh	Tapping
8-10	3	1.4	M4
NK10	4	1.8	
11-12	4	1.8	
13-17	5	2.3	M5
18-22	6	2.8	