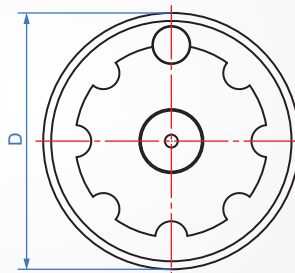
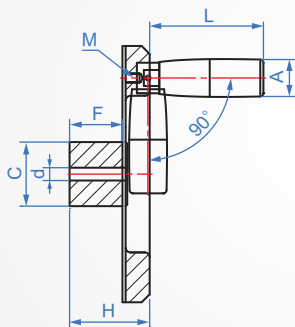
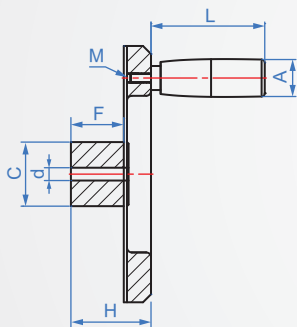


Cast iron  
**OM964**  
Internal tooth shape



**A**  
(With fixed handle)

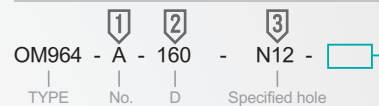
**B**  
(With folding handle)



No.		Ontology		Handle	
Material	Finish	Material	Finish	Material	Color
Cast iron FC20	Chrome plating	Iron	Chrome plating	Bakelite	Black
	Sandblasting		Sandblasting		

※ No.B handle attached to the handwheel is only black bakelite.

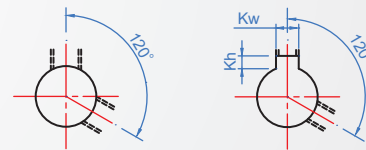
**How to order**



Select surface treatment

Chrome plating.....	<input type="checkbox"/> CR
Sandblasting.....	<input type="checkbox"/> SN

**P** Round hole + tapping 120°    **N** Keyway + tapping 120°



■ Shaft hole P, N size table

No.	D	d	Hole shape	Aperture	C	F	H	Rotary handle			weight kg	
								A	L	M		
								unit : mm				
<b>A</b> (With fixed handle)	160	7.2	P	8~22	42	32	45	13	23	90	1.5	
	200	8.2		10~30	50	34	47	17	23	65	1.8	
<b>B</b> (With folding handle)	160	8		N	8~22	40	33	50	20	26	80	2.6
	200				10~30	50	32	52	20	26	80	2.6

unit : mm			
Shaft aperture	Kw	Kh	Tapping
8~10	3	1.4	M4
11~12	4	1.8	
13~17	5	2.3	M5
18~22	6	2.8	M6
23~30	8	3.3	

(New JIS B 1301)