

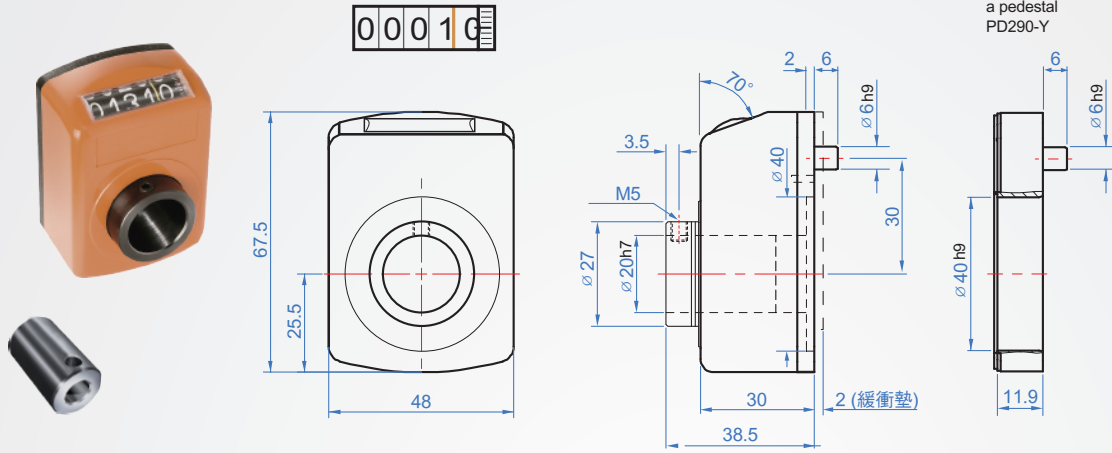
5 Digit type PD291

Feature

- >Five digit display including a digital point
- >>Compact type position indicators DP290 provide four mounting types, commonly used processing industries.





Main Part		Indicator	Cushion Sheet	Pedestal	
Material	Mass			Material	Mass
Nylon 6 (Orange)	0.05 (kg)	Steel (Black oxide)	Polyethylene Foam	Nylon (Flat Black)	10 (g)

Operating Temperature : ~ +80°C

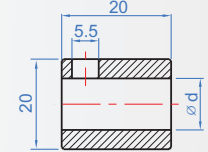


How to order



1		2		3		Unit : mm
Pitch	Count increment resolution	Roatating direction	Maximum rotating speed (rpm)	Digital read direction		
1	0001.0	R Clockwise	500	A Top tilt type	B Vertical spindle type	
2	0002.0		500			
3	0003.0		500			
4	0004.0		375			
5	0005.0	L Counterclockwise	300	C Front spindle type	D Below axis type	
6	0006.0		250			
8	0008.0		180			
10	0010.0		150			

Variable diameter Indicator Collar PD290-Z□



Material	d	No.
S45C (Black oxide)	8	Z8
	10	Z10
	12	Z12
	14	Z14
	15	Z15
	16	Z16
	18	Z18

※ Proposal the corresponding axis tolerance : g6

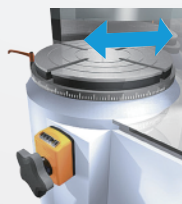
Shell label

Counterclockwise
Pitch - 3.0

According to Position Digital indicators exact Pitch and roatating direction , In shipment paste the label.

EX :

Available in Variable diameters , apply to circular saw and other install.



Provide a hole used for locating

1.Mount the included cushion sheet and pass it through the screw shaft.

2.Set the indicator at "0" and then fix it with the attached set screws.

