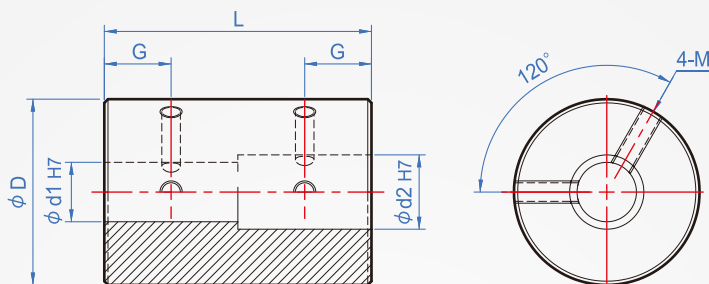


Steel coupling CH441

Set screw
120°



Main part	Set screw
A6061 (Clear anodizing)	SCM435 (Black oxide)
SUS304	SUS304

How to order

1 CH441 - 16 - 6x7 -
 TYPE D d1xd2

Material chosen
 A6061.....
 SUS304..... SUS

D	d1 \ d2		Material	L	G	M	Quality		Torque (N · m)	Max. torque (N · m)	Highest number of rotations (rpm/min)	Moment of inertia (kg · m ²)	
	min.	max.					AL	SUS				AL	SUS
16	5	~ 8	AL	24	6	M3	11	31	0.3	0.6	24000	4.4 × 10 ⁻⁷	1.2 × 10 ⁻⁶
20	6	~ 10		SUS	30	7	M4	20	53	0.5	1.0	19000	1.3 × 10 ⁻⁶
25	6	~ 12	36		9	39		105	1.0	2.0	15000	3.9 × 10 ⁻⁶	1.0 × 10 ⁻⁵
32	8	~ 16		41	10	M5	71	190	2.0	4.0	12000	1.2 × 10 ⁻⁵	3.1 × 10 ⁻⁵

Unit : mm