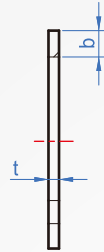
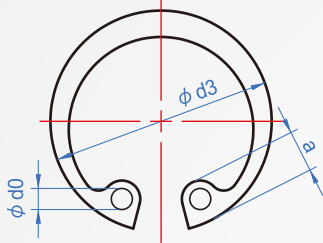


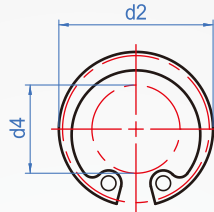
C-RING FOR HOLE  
**WA701**  
RTW



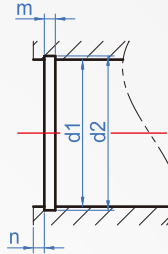
Material	hardness	Finish
Steel	HRC	Black
SUS420	44~52	—



d4 : The minimum diameter when the buckle is placed in d1.



Applicable hole



How to order

WA701 - 5 -   
 TYPE No.  
 Select material  
 Carbon steel type..   
 SUS420. ....  SUS

Unit : mm

No.	d3	tolerance	t	tolerance	b	a	d0	Applicable holes (reference)											
								d1	d2	tolerance	d4	m	tolerance	n Minimal					
5	5.6	±0.18	0.3	±0.04	0.75	1.2	0.75	5	5.2	+0.04	2	0.5	+0.1 -0	0.5					
6	6.7		0.4		0.7	1.6	0.8	6	6.25	-0	2.5			0.5	0.5				
7	7.7		0.8		0.9	1.7	0.8	7	7.3	+0.06	3			0.5					
8	8.8		1.1		2.2	1.7	0.8	8	8.4		-0			3.5	0.6				
9	9.8		0.6		1.5	2.2	1.2	9	9.4	+0.11	4			0.7	0.6				
10	10.7		1		3	2.8	1.2	10	10.4		3			1.5					
11	11.8		1.5		3	3	1.2	11	11.4		4			1.5					
12	13.0		1.7		3.1	3	1.5	12	12.5		5			1.5					
13	14.1		1.9		3.1	3.6	1.5	13	13.6		6			1.5					
14	15.1		3.7		3.1	3.6	1.7	14	14.6		7			1.5					
15	16.2	3.7	1.9	3.7	1.7	15	15.7	8	1.5										
16	17.3	3.8	1.9	3.7	1.7	16	16.8	8	1.5										
17	18.3	2.4	1.9	3.8	1.7	17	17.8	9	1.5										
18	19.5	±0.2	1	±0.05	2	2	2	18	19		+0.21	10	1.15	+0.14	1.5				
19	20.5							19	20	11		1.5							
20	21.5							20	21	12		1.5							
21	22.5							21	22	12		1.5							
22	23.5							22	23	13		1.5							
23	24.5							23	24.1	14		1.5							
24	25.9							24	25.2	15		1.5							
25	26.9							25	26.2	16		1.5							
26	27.9							26	27.2	16		1.5							
27	29							27	28.3	17		1.5							
28	30.1	28	29.4	18	1.5														
30	32.1	30	31.4	20	1.5														
32	34.4	±0.25	1.2	±0.05	3	2	2	32	33.7	+0.25	21	1.35	+0.14	1.5					
35	37.8							35	37		24			2					
36	38.8							36	38		25			2					
37	39.8							37	39		26			2					
38	40.8							38	40		27			2					
40	43.5							40	42.5		28			2					
42	45.5							42	44.5		30			2					
45	48.5							45	47.5		33			2					
47	50.5							47	49.5		34			2					
48	51.5							48	50.5		35			2					
50	54.2	50	53	37	2														
52	56.2	±0.4	1.5	±0.06	3	2.5	2.5	52	55	+0.3	39	2.2	-0	2					
55	59.2							55	58		41			2					
60	64.2							60	63		46			2					
62	66.2							62	65		48			2					
65	69.2							65	68		50			2.5					
68	72.5							68	71		53			2.5					
70	74.5							70	73		55			2.5					
72	76.5							72	75		57			2.5					
75	79.5							75	78		60			2.5					
80	85.5							80	83.5		64			2.5					
85	90.5	±0.45	2	±0.06	3	2.5	2.5	85	88.5	+0.35	69	2.7	+0.18	3					
90	95.5							90	93.5		73			3	-0	73	3.2	-0	3
100	105.5							100	103.5		82			3	-0	82	3	-0	3

※Information contained less prepared. Other dimensions, please contact CheNa.

Copyright © CHENA INDUSTRIAL CO.,LTD ALL Rights Reserved.