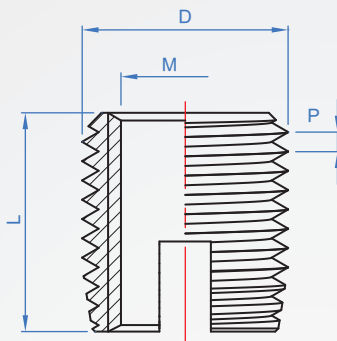


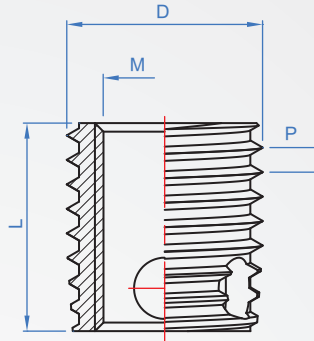
# Self-Tapping Inserts NL727



A : Chute type  
B : Thin wall



C : Three-hole type



Material	Finish
Steel	Color zinc plating
SUS303	-

※Thin wall type is only available in SUS material.

### How to order

1 2 3  
 NL727 - A - M3 - 6 -   
TYPE NO. M L  
 Select material  
 Steel.....   
 SUS303.....  **SUS**

No.	M Internal thread selection			L	D External thread	Drill hole diameter (reference)				Boxed price
	(Metric)	P	(Imperial)			Plastic material (soft)	Aluminum (middle)	Cast iron (hard)	depth min.	
A (Chute type)	M3	0.5	6-32	6	M5x0.5	4.5~4.6	4.6~4.7	4.7~4.8	8	
	M4	0.7	8-32	8	M6.5x0.75	5.8~5.9	6.0~6.1	6.1~6.2	10	
	M5	0.8	10-24	10	M8x1.0	7.1~7.2	7.3~7.5	7.5~7.6	13	
	M6	1.0	12-24	12	M9x1.0	8.1~8.2	8.3~8.5	8.5~8.6	15	
	M6	1.0	1/4-20	14	M10x1.5	9.0~9.2	9.2~9.3	9.3~9.4	17	
	M8	1.25	5/16-18	15	M12x1.5	10.6~10.8	11.0~11.2	11.2~11.4	18	
	M10	1.5	3/8-16	18	M14x1.5	12.6~12.8	13.0~13.3	13.2~13.4	22	
	M12	1.75	7/16-14	22	M16x1.5	14.6~14.8	15.0~15.3	15.2~15.4	26	
	M16	2.0	3/4-10	22	M20x1.5	18.6~18.8	19.0~19.3	19.2~19.5	27	

No.	Internal thread selection		L	D External thread	Drill hole diameter (reference)				Boxed price
	M	P			Plastic material (soft)	Aluminum (middle)	Cast iron (hard)	depth min.	
B (Thin wall)	M3	0.5	6	M4.5x0.5	4	4.1	4.2	8	
	M4	0.7	6	M6x0.7	5.3	5.5	5.6	8	
	M5	0.8	8	M7x0.8	6.3	6.4	6.5	10	
	M6	1.0	10	M8x1.0	7.1	7.3	7.5	13	
	M8	1.0	12	M10x1.25	8.6	8.9	9.3	15	
	M10	1.25	15	M12x1.5	10.6	10.9	11.3	18	

No.	M Internal thread selection			L	D External thread	Drill hole diameter (reference)			Boxed price
	(Metric)	P	(Imperial)			Aluminum (middle)	Cast iron (hard)	depth min.	
C (Three-hole type)	M3	0.5	4-40	4	M5x0.6	4.6~4.7	4.7~4.8	6	
				6				8	
	M4	0.7	8-32	6	M6.5x0.8	6.0~6.1	6.1~6.2	8	
				8				10	
	M5	0.8	10-24	7	M8x1.0	7.4~7.5	7.6~7.7	9	
				10				13	
	M6	1.0	1/4-20	8	M10x1.25	9.3~9.4	9.5~9.6	10	
				12				15	
	M8	1.25	5/16-18	9	M12x1.5	11.1~11.3	11.3~11.4	11	
				14				17	
	M10	1.5	3/8-16	10	M14x1.5	13.1~13.3	13.3~13.5	13	
				18				22	
	M12	1.75	7/16-14	12	M16x1.75	15.0~16.2	15.0~16.2	15	
				22				26	
M16	2.0	5/8-11	14	M20x2	19.0~19.2	19.3~19.5	17		
			24				28		

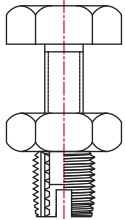
※ Drilling depth is used for chip removal purposes.  
 ※ With reference to the drill hole, this product has self-tapping capability.

Copyright © CHENA INDUSTRIAL CO., LTD ALL RIGHTS RESERVED.

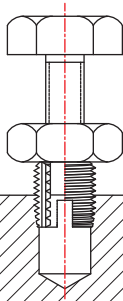
## [ General screw and nut assembly method ]

Can use general hex head screws and nuts

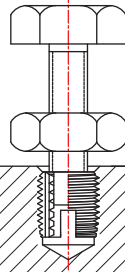
(1) First fix the threaded sleeve with a nut.



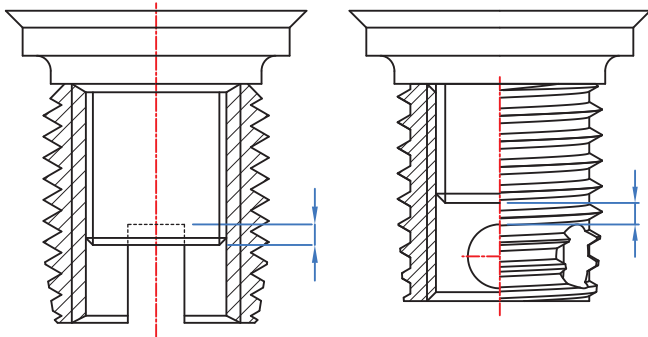
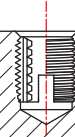
(2) Screw into the lower hole



(3) Loosen the screw cap with the wrench and remove the screw smoothly.



(4) The thread sleeve will remain in place.



In order to ensure smooth thread removal of the threaded sleeve and avoid tools such as easy breakage, the length of the end of the tool thread should be properly adjusted from the distance between the apertures in the figure.