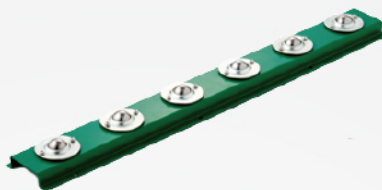
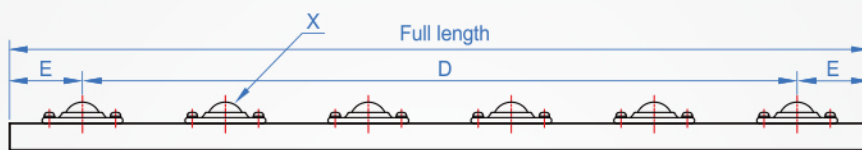
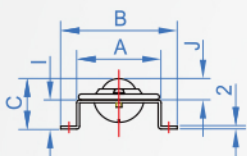
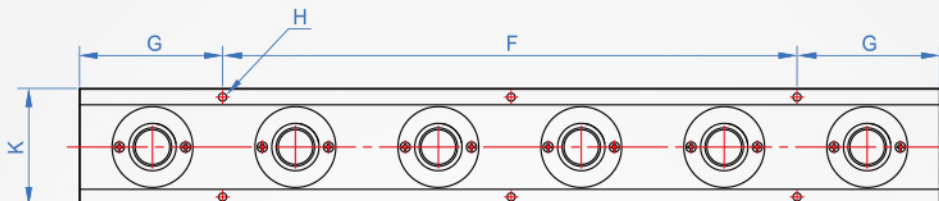


## Ball roller units BR802



Chip removal hole

※ Ball rolling becomes not smooth, dust will be discharged through the cracks, so that can keep the ball rolling smoothly.



Dish type ball roller : Steel  
Support : Steel(Green paint)

### How to order

BR802 - FU-9  
TYPE Code

Unit : mm

Code	A	B	C	D	E	F	G	H	I	J	Full length	K	X	Weight (kg)
FU-6	58	80	34.6	100pitch x 5=500	50	200pitch x 2=400	100	6-Ø5.5	20	14.6	600	68.5	C-8L-SL4(6 pcs)	1.8
FU-9				100pitch x 8=800		200pitch x 4=800	50	10-Ø5.5			900		C-8L-SL4(9 pcs)	2.6
FU-12				100pitch x 11=1100		200pitch x 5=1000	100	12-Ø5.5			1200		C-8L-SL4(12pcs)	3.5
FU-18				100pitch x 17=1700	200pitch x 8=1600	18-Ø5.5	1800	C-8L-SL4(18pcs)			5.2			
FU-9-75				75pitch x 11=825	200pitch x 4=800	50	10-Ø5.5	900			C-8L-SL4(12pcs)		3	
FU-18-75				75pitch x 23=1725	200pitch x 8=1600	100	18-Ø5.5	1800			C-8L-SL4(24pcs)		6	

Dish type main ball can choose SUS or Nylon, Please refer to BR810 series 8L type.

Note