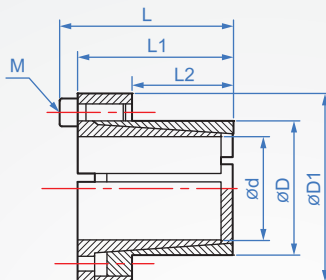
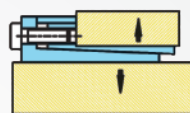


Thin flange Type
LP454



Installation example



Material	Finish
S45C	—
	Black oxide
	Electroless nickel

How to order

LP454 - 12 -
 TYPE d

Finish chosen

No finish.....
 Black oxide.....
 Electroless nickel....

Unit : mm

d	D	D1	L2	L1	L	支 - M	F KN	TS Nm ²	T Nm	Surgace pressure Mpa	Weight (g)				
6	14	25	9	21	24	3-M3	4.8	2	14	86	80				
8	15	27	12	25	29	3-M4	10	5	29	205	100				
10	16	28	14	26	30	4-M4			49	185	120				
12	18	32							58	160	140				
13	23	38	16	36	42	3-M6	17	17	63	140	140				
14	23	45							18	38	44	4-M6	68	130	150
15	24												127	185	260
16	24	45	18	38	44	4-M6	22	17	136	175	250				
17	26	47							180	190	270				
18	26	47							200	160	270				
20	28	49	25	45	51	6-M6	35	17	220	170	300				
22	32	54							250	120	380				
24	34	56							270		400				
25	34	56	25	45	51	6-M6	35	17	280	150	390				
28	39	61							500		470				
30	41	62							530		480				

M : Metric screw TS : Screw tightening torque T,F : Under the TS convey torque and axial thrust