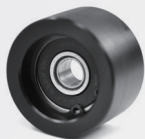
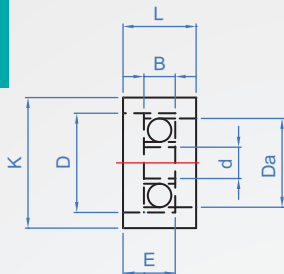


Flat wheel for bracket

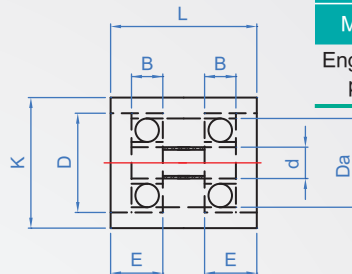
RS354



S-Single bearing



S2-Double bearing



Plane wheel

Material Bearing

Engineering plastic SUJ2

1

2

Unit : mm

L	No.	K	E	Attached bearing					
				No.	d	D	B	Da	
14	S	25	10	626 RS	6	19	6	17	
27	Single bearing	45	18.5	6201 RS	12	32	10	27	
45	S2	45	15	6201 RS	* 10	32	10	27	
65	Double bearing		22.5		12				

How to order

RS354 - 14 - S
TYPE L No.

* The original 6201 bearing bore 12 is embedded in the sleeve and becomes the bore 10 .

©Remarks:

- The flexible idler must be preloaded at the required angle (15 to 25 degrees) before it can be used for automatic adjustment and shock protection.
- The idler should be installed on the slack side as shown on the right.
- Please install it on both sides when reversing. If only one side is installed, it should be noted that the idler angle must not be greater than 30 degrees when reverse tension is applied.
- The life of the elastic idler is semi-permanent, but the angle of use should not exceed 30 degrees, otherwise there is a danger of destruction.
- Auxiliary screws are protective devices against improper use. They can be removed when necessary and will not affect the overall function.
- Do not remove the auxiliary screws when using on the outside, otherwise the use angle should not exceed 15 degrees.

