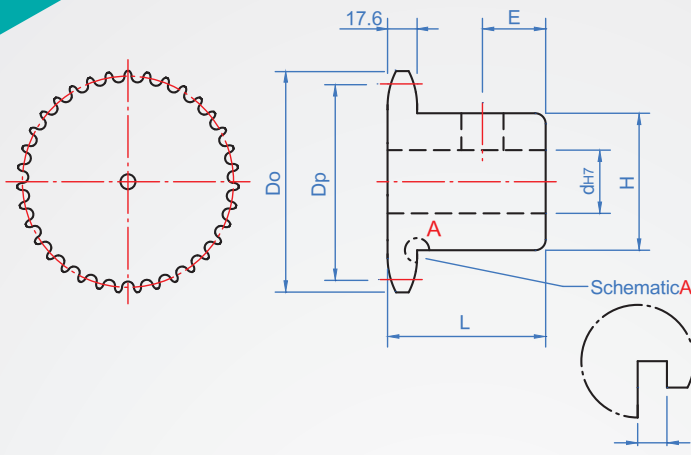


Pitch : 31.75 mm

RS100B



Note : 9~11 teeth have the part marked with *, and the wheel shell has the escape groove of processing 10.

Material	surface treatment
S45C (Tip high frequency)	—
	Black
	Electroless nickel

* Attached to the socket set screws

How to order

RS100B - 18 - N25 -

TYPE Number of teeth Hole type

Select surface treatment

No processing.....

dye Black..... TB

Electroless nickel..... TN

Copyright © CHENA INDUSTRIAL CO.,LTD ALL RIGHTS RESERVED.

1		2									unit : mm	
Number of teeth	Dp	Do	Hole shap	dh7	H	L	E	Number of teeth	Weight (kg)			
9*	92.83	106	Keyway + Tapping	19 ~ 30	72	55	15	9	1.57			
10*	102.75	117			82.5			10	1.84			
11*	112.70	127			92			11	2.36			
12	122.67	138		NV Tapping 90°	19 ~ 35			90	12	2.96		
13	132.67	148						94	13	3.53		
14	142.68	158		N Tapping 120°	25 ~ 40			98	14	3.98		
15	152.71	168							15	4.3		
16	162.74	179							16	4.65		
17	172.79	189							17	5.38		
18	182.84	199							18	5.77		
19	192.9	209			25 ~ 50			107	19	6.08		
20	202.96	220	20			6.51						
21	213.03	230	21			6.96						
22	223.1	240	22			8.28						
23	233.17	250	23			8.77						
24	243.25	260	Chain slot New JIS_B_1301	60	20	24	9.29					
25	253.32	270				25	9.83					
26	263.4	281				26	10.4					
27	273.49	291				27	11					
28	283.57	301				28	11.6					
29	293.65	311				29	12.2					
30	303.75	321				30	12.9					

Axis aperture	kw(Js9)	kh	Tapping
19 ~ 22	6	2.8	M6
23 ~ 30	8	3.3	M8
31 ~ 38	10	3.3	
39 ~ 44	12	3.3	M10
45 ~ 50	14	3.8	