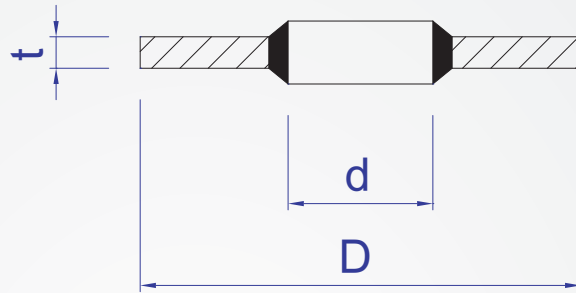


Washers NR788

Materials

carbon steel

The Bonded Seal is a rubber pad that adheres to the inner ring of the washer to make the washer tight and achieve oil and water resistance.



How to order

NR788 - M4-4.6
 TYPE M d

Applicable screws	common size		
	d	D	t
M3	3.6	7.2	1
M3.5	4.1	7.2	1
M4	4.5	7	1
	4.6	9	1
M5	5.6	10	1
	5.7	9	1
M5.5	6.2	9.2	1
	6.6	11	1
M6	6.7	10	1
		11	1
	6.85	11	2.5
		13.3	1.3
7	11.4	1	
M7	7.1	12	1
	7.3	10.2	1
M8	8.5	13.4	1
	8.6	13	1
		13	1
8.7	14	1	
	16	1	
	M9	9.3	13.3
M10	10.4	16	2
	10.7	16	1.5
		17	1.5
		18	1.5

Applicable screws	common size		
	d	D	t
M11	11.4	16.3	1.5
	11.8	18.1	1.5
		18.5	1.5
		19.1	1.5
M12	12.7	18	1.5
		19	1.5
		20	1.5
M13	13.7	20	1.5
	13.7	22	1.5
	13.8	20.1	1.5
	14	18.7	1.5
M14	14.7	21	1.5
M15	16	22	1.5
		22.7	1.5
M16	16.7	23	1.5
		24	1.5
M17	17.2	24	2
	17.4	24	1.5
	18	24.7	1.5
M18	18.7	26	1.5
		27	2
M20	20.7	28	1.5
		29	2
M21	21.5	28.7	2.5
	22.5	28	1.5
	22.7	30	2

Applicable screws	common size		
	d	D	t
M21	22.7	30	3
		31	2
M23	23.7	32	2
M24	24.7	32	2
		33	2
M26	26.7	35	2
		27	35.3
M27	27.2	36	2
		27.7	36
M28	28.6	36	2
		28.7	37
M29	29.2	37.5	2
M30	30.7	39	2
		31	39
M33	33.7	42	2
		34.3	43
M36	34.3	43	2
		37	48
M39	40	51	2.5
M42	42.7	53	3
		43	54
M45	46	57	2.5
M48	48.7	59	3
		49	60
M51	52	60	3
M52	53.3	65	3