

## Hex Head Screw

**JS713**

## Through Hole

characteristic :

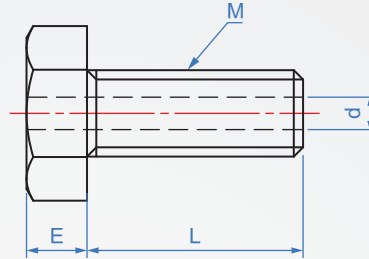
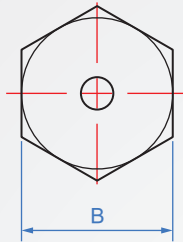
Through hole screws are suitable for exhaust and gas filling applications. Such as semiconductor manufacturing, FPD flat panel display manufacturing, etc. vacuum suction equipment.

Material

SUS304

Strength  
distinction

A2-70



## How to order

JS713 - M4 - 6

TYPE      M      L

Unit : mm

1		2											Unit : mm
M	Pitch	L								B	d	E	PCS/PKG
M3	0.5	6	8	10	12		16			5.5	1.2	2	20
M4	0.7	6	8	10	12	15		20		7	1.5	2.8	
M5	0.8		8	10	12		16	20	25	8	2	3.5	10
M6	1.0		8	10	12		16	20	25	30		10	
M8	1.25					15		20	25	30		13	5.5

Units for the package get more preferential.