

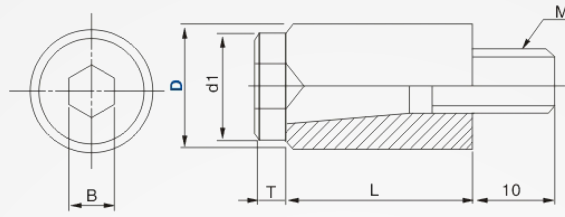
Resin switch

**901E**  
**911E**



**911E**  
High temperature  
resistance

**901E**



Type	Resin	Taper screw
901E	Dupont nylon Operating temperature below 80° C	SCM435
911E	PEEK (beige) Operating temperature below 200° C	dye black

How to order



Type	unit : mm						
	D	M	d1	B	T	L	901E (piece/box)
901E (yellow, orange, white)	10	5	8.5	3	3	18	12enter
	12	6	11.5	5	4.5	20	
	13					25	
911E (Beige)	16	8	14	6	5.5	30	10enter
	20	10	16	8			

\* 901E (sold in boxes, color not specified), 911E (sold individually)