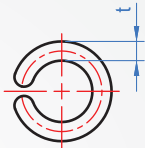
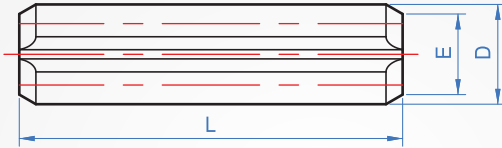


Spring pins (Heavy-duty)

WA706

SPP

L allowable tolerance	Material	Hardness	Surface treatment
4~10 (+0.5/-0)	Carbon steel	HRC45~50	Dyed black
12~50 (+1.0/-0)	SUS304	-	-



How to order



Material chosen
 Spring steel.....Blank
 SUS304.....SUS

1																2				Unit : mm			
D	L															Double shear load min.		E	t	D			
																kgf	KN			Max	Min		
	4	5	6	8	10	12	14	16	18	20	22	24	25	26	28							30	
1.5	4	5	6	8	10	12	14	16								158	1.55	1.4	0.3	1.7	1.6		
1.6	4	5	6	8	10	12	14	16								171	1.68	1.5		1.8	1.7		
2	4	5	6	8	10	12	14	16	18							281	2.76	1.9	0.4	2.25	2.15		
2.5		5	6	8	10	12	14	16	18	22	22	24	25			440	4.3	2.4	0.5	2.75	2.65		
3		5	6	8	10	12	14	16	18	20	22	24	25			633	6.2	2.9	0.6	3.25	3.15		
4			6	8	10	12	14	16	18	20	22	24	25	26		1130	11.08	3.9	0.8	4.4	4.2		
5				8	10	12	14	16	18	20	22	24	25	26	28	30	1760	17.25	4.8	1	5.4	5.2	
6					10	12	14	16	18	20	22	24	25	26	28	30	2532	24.83	5.8	1.2	6.4	6.2	
8						12	14	16	18	20	22	24	25		28	30	4500	44.13	7.8	1.5	8.6	8.3	
10									20			24	25		28	30	7030	68.94	9.8	2	10.6	10.3	

※ There are other dimensions, welcome to contact ChaNa and order.

Copyright © CHENA INDUSTRIAL CO.,LTD ALL RIGHTS Reserved.

Che Na

886-2688-3177

info@chena.com.tw

886-22688-3188
886-2688-3881~3

No.21, Guangrong St. Shulin Dist.,
New Taipei City 238 Taiwan (R.O.C.)