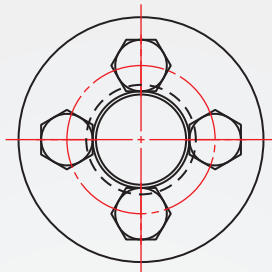
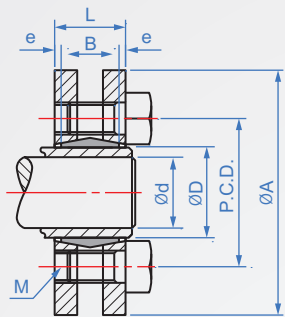


Beam type LP455

※Features: Use when improving the inner diameter of the bushing.



Ontology	Finish	Hex head screw
S45C	—	SCM435 (Dye black)
	Dye black	
	Electroless nickel	SUS

How to order

LP455 - 14 -

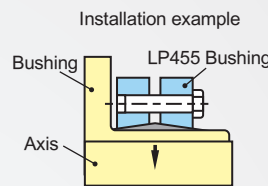
TYPE D

Select surface treatment

No treatment.....

Dye black.....

Electroless nickel...



D	A	P.C.D.	B	L	e	Count - M	Locking torque Nm	(d) Reference shaft diameter	Allowable torque N · m	Axial thrust KN	Surface pressure Mpa	weight (g)
14	38	23	7	11	2	4-M5	5	11	30	6	186	100
								12	50	9		
16	41	26	11	15	2	5-M5	5	13	70	10	130	150
								14	90	13		
24	50	36	14	19	2.75	6-M5	5	19	170	25	286	200
								20	210	27		
								21	250	29		
30	60	44	16	21	2.75	7-M5	5	24	300	29	233	300
								25	340	31		
								26	380	33		
36	72	52	18	23	2.75	5-M6	12	28	440	50	307	470
								30	570	58		
								31	630	58		
44	80	61	20	25	2.75	7-M6	12	32	620	64	317	600
								35	780	74		
								36	860	77		
50	90	70	22	27	2.75	8-M6	12	38	940	79	289	840
								40	1160	86		
								42	1380	92		
55	100	75	23	30	3.75	8-M6	12	42	1160	79	252	1100
								45	1520	88		
								48	1880	99		
								48	1850	100		
62	110	86	23	30	3.75	10-M6	12	50	2200	111	279	1300
								52	2400	117		
								50	2000	97		
68	115	86	23	30	3.75	10-M6	12	55	2500	106	255	1400
								60	3150	120		
								55	2500	119		
75	138	100	25	32	3.75	7-M8	30	60	3200	137	273	2400
								65	3950	155		
								60	3200	124		
80	145	100	25	32	3.75	7-M8	30	65	3900	140	256	2600
								70	4600	158		
								65	4800	175		
85	155	114	30	39	4.5	10-M8	30	70	6100	195	285	3400
								75	7400	216		
								65	4750	170		
90	155	114	30	39	4.5	10-M8	30	70	6000	190	271	3300
								75	7250	210		
								70	6900	195		
								75	7500	220		
100	170	124	34	44	5	12-M8	30	80	9000	240	258	4400
								75	7200	229		
								80	9000	252		
110	185	136	39	50	5	9-M10	59	85	10800	262	244	5900
								80	7400	235		
								85	9200	259		
115	188	141	39	50	5.5	9-M10	59	90	11100	269	234	5800
								80	10600	285		
								85	13300	314		
120	215	160	42	54	6	12-M10	59	90	14500	340	277	8600
								85	11000	296		
								90	13000	324		
125	215	160	42	54	6	12-M10	59	95	15000	352	266	8600
								90	11300	304		
								95	13300	333		
130	215	160	42	54	6	12-M10	59	100	15400	362	255	9000
								95	15100	367		
								100	17600	396		
140	230	175	46	60	7	10-M12	100	105	20100	425	264	10000
								105	22000	447		
								110	25000	478		
155	265	192	50	64	7	12-M12	100	115	28000	509	263	16000
								110	25000	478		

Copyright © CHENA INDUSTRIAL CO., LTD ALL Rights Reserved.