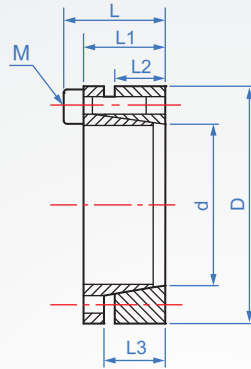
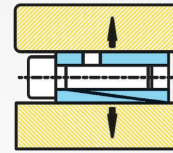


## Self-centering LP452



Installation example



Material	Finish
S45C	—
	Black oxide
	Electroless nickel

### How to order

LP452 - 10 -   
 TYPE      d

**Finish chosen**  
 No finish.....   
 Black oxide.....   
 Electroless nickel....



Unit : mm											
d	D	L	L1	L2	L3	Screw rotation torque		Surface pressure Mpa	Allowable torque Nm	Axial thrust KN	Weight (g)
						Count-M	N · m				
6	19	16.5	13.5	8	10.5	3-M3	2.3	53	6.2	4	20
8	22					4-M3		70	18	4.7	30
10	24	21	17	10	13	6-M3	2.3	87	30	6.2	60
12	26					7-M3		100	47	7.8	70
13	27	26	21	12.5	16	6-M4	3.9	97	50	10	80
15	32							84	75		85
16	33	34	28	17	22	8-M4	3.9	81	80	12.5	90
17	34							99	105		100
18	35	34	28	17	22	6-M6	14	96	110	34	100
20	47							320	32		250
22	47	34	28	17	22	6-M6	14	360	320	34	270
24	50							420			320
25	50	34	28	17	22	6-M6	14	500	320	34	320
28	55							520			320
30	55	34	28	17	22	6-M6	14	520	320	34	350

※There are other dimensions, welcome to contact ChaNa and order.