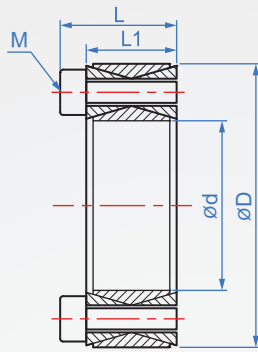
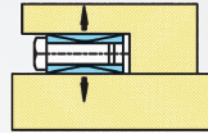


None self-centering
LP450



Installation example



Material	Finish
S45C	—
	Black oxide
	Electroless nickel

How to order

LP450 - 18 -
 TYPE d

Finish chosen

No finish.....
 Black oxide..... B
 Electroless nickel... TN



Unit : mm

d	D	L	L1	Screw tightening torque		Allowable torque Nm	Axial thrust KN	Surface pressure Mpa	Weight (g)	
				Count-M	N · m					
18	47	26	20	8-M6	14	250	27	90	240	
20	47					270			230	
22	47					300			220	
24	50					360			240	
25	50					380			240	
28	55			12-M6	14	470	34	100	280	
30	55					500			270	
32	60					650			320	
35	60					700			300	
38	65					15-M6			14	880
40	65	950	330							
42	75	12-M8	24	35	75		130	580		
45	75					1700		550		
48	80					1800		620		
50	80					1900		590		
55	85					14-M8		35	2300	85
60	90			2500	680					
65	95			16-M8	24	69	95	140	730	
70	110								3000	1300
75	115								4800	1350
80	120			14-M10	28	69	130	130	1420	
85	125	5000	1500							
90	130	5300	1560							
95	135	6400	1630							
100	145	16-M10	28	69	170	140	1700			
110	155						8000	1630		
120	165						9700	2230		
130	180						10600	2370		
140	190	15-M12	33	120	190	130	2600			
150	200						13000	2100		
160	210						18000	2700		
170	225	20-M12	38	120	270	120	3600			
180	235						21000	3000		
190	250						24000	3200		
200	260	26-M12	50	190	350	130	4300			
220	285						28000	4300		
240	305	20-M14	58	44	380	120	5700			
260	325						33000	5700		
180	235	24-M14	52	190	420	110	6000			
190	250						38000	6000		
190	250	28-M14	66	52	480	110	8200			
200	260						46000	8200		
220	285	30-M14	75	56	530	120	8500			
240	305						53000	8500		
240	305	26-M16	75	295	320	130	11220			
260	325						68000	11220		
240	305	30-M16	75	295	710	130	12200			
260	325						86000	12200		
240	305	34-M16	75	295	810	135	13500			
260	325						105000	13500		

Copyright © CHENA INDUSTRIAL CO., LTD ALL RIGHTS RESERVED.