

Toothed idler

DU300 3GT

Belt Width(mm)	6	10	15
Common size	A=7 W=11	A=11 W=15	A=17 W=21

Main Part	Flang	Finish	Code
aluminum alloy	aluminum	Clear anodizing	AS
		Black anodized	AB
		Electroless nickel	AK
		Hard anodized	AN
S45C	Iron	Byed black	TB
		Electroless Nickel	TN

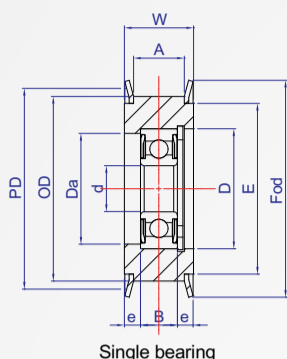
Y Single bearing Retaining ring

Z Two bearing Retaining ring

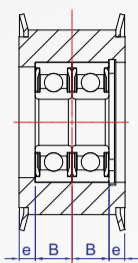
Center bearing



Two side bearing



Single bearing



Two bearing

How to order

DU - 20 - 3GT - 6 - -

① TYPE Number of teeth
② Tooth width
③ Kind

Choose a finish

Aluminum + White Anodized.....	AS
Aluminum + Black Anodized.....	AB
Aluminum + hardened anode.....	AK
Aluminum + Electroless Nickel.....	AN
S45C+ dyed black.....	TB
S45C+ Electroless Nickel.....	TN

Number of teeth	Tooth width	Kind	d	P.D	O.D	E	Fod	Y Single bearing					Z Two Bearing																									
								No.	B	D	Da Max	e	C ring	No.	B	D	Da Max																					
20	3GT-6 A=7 W=11	Y ,	5	19.1	18.34	14.5	22.6	685ZZ	5	11	9.8	3	R11	685ZZ	2pc	5	11	9.8																				
22				21.01	20.25	15	25												695ZZ	4	13	11.4	3.5	R13	695ZZ	4	13	11.4										
24		22.92		22.16	18	26	696ZZ																						5	15	13.4	3	R15	696ZZ	5	15	13.4	
25		23.87		23.11	18	27													698ZZ	6	19	17	2.5	R19	698ZZ	6	19	17										
26		24.83	24.07	18	28	6900ZZ		6	22	20	2.5	R22	6900ZZ	6	22	20																						
28		26.74	25.98	21	30												6901ZZ	6																				24
30		28.65	27.89	22.5	32		6900ZZ																						6	22	20	4.5	R22	6900ZZ	6	22	20	
32		30.56	29.8	24	35														6901ZZ	8	28	26	3.5	R28	6901	6	24	22										
34		32.47	31.71	26	36	6900ZZ		6	22	20	4.5	R22	6900ZZ	6	22	20																						
35		33.42	32.66	28	37												6901ZZ	8																				28
36		34.38	33.62	29	38		6900ZZ																						6	22	20	4.5	R22	6900ZZ	6	22	20	
38		36.29	35.52	31.6	40														6901ZZ	8	28	26	3.5	R28	6901	6	24	22										
40		38.2	37.44	33.2	42	6900ZZ		6	22	20	4.5	R22	6900ZZ	6	22	20																						
42		40.11	39.35	33	45												6901ZZ	8																				28
44		42.02	41.25	34	47		6900ZZ																						6	22	20	4.5	R22	6900ZZ	6	22	20	
45		42.97	42.21	34	47														6901ZZ	8	28	26	3.5	R28	6901	6	24	22										
46		43.93	43.16	37	49	6900ZZ		6	22	20	4.5	R22	6900ZZ	6	22	20																						
48		45.84	45.07	37	49												6901ZZ	8																				28
50		47.75	46.98	39	51		6900ZZ																						6	22	20	4.5	R22	6900ZZ	6	22	20	
60		57.3	56.53	52	61														6901ZZ	8	28	26	3.5	R28	6901	6	24	22										
70	66.85	66.08	58	71	6900ZZ	6		22	20	4.5	R22	6900ZZ	6	22	20																							
72	68.75	67.99	59	73												6901ZZ	8	28																				26
80	76.39	75.63	60	80			6900ZZ																						6	22	20	4.5	R22	6900ZZ	6	22	20	
90	85.94	85.18	70	90															6901ZZ	8	28	26	3.5	R28	6901	6	24	22										
100	95.49	94.73	80	100	6900ZZ	6		22	20	4.5	R22	6900ZZ	6	22	20																							
20	3GT-10 A=7 W=11	Y ,	5	19.1												18.34	14.5	22.6																				685ZZ
22				21.01			20.25									15	25	695ZZ											4	13	11.4	3.5	R13	695ZZ	4	13	11.4	
24		22.92		22.16			18									26	696ZZ		5	15	13.4	5	R15	696ZZ	5	15	13.4											
25		23.87		23.11	18	27	698ZZ	6	19	17	4.5	R19	698ZZ	6	19	17																						
26		24.83	24.07	18	28	6900ZZ												6										22	20	4.5	R22	6900ZZ	6	22	20			
28		26.74	25.98	21	30																															6901ZZ	8	28
30		28.65	27.89	22.5	32												6900ZZ		6	22	20	4.5	R22	6900ZZ	6	22	20											
32		30.56	29.8	24	35		6901ZZ	8	28	26	3.5	R28	6901	6	24	22																						
34		32.47	31.71	26	36	6900ZZ												6										22	20	4.5	R22	6900ZZ	6	22	20			
35		33.42	32.66	28	37																															6901ZZ	8	28
36		34.38	33.62	29	38												6900ZZ		6	22	20	4.5	R22	6900ZZ	6	22	20											
38		36.29	35.52	31.6	40		6901ZZ	8	28	26	3.5	R28	6901	6	24	22																						
40		38.2	37.44	33.2	42	6900ZZ												6										22	20	4.5	R22	6900ZZ	6	22	20			
42		40.11	39.35	33	45																															6901ZZ	8	28
44		42.02	41.25	34	47												6900ZZ		6	22	20	4.5	R22	6900ZZ	6	22	20											
45		42.97	42.21	34	47		6901ZZ	8	28	26	3.5	R28	6901	6	24	22																						
46		43.93	43.16	37	49	6900ZZ												6										22	20	4.5	R22	6900ZZ	6	22	20			
48		45.84	45.07	37	49																															6901ZZ	8	28
50		47.75	46.98	39	51												6900ZZ		6	22	20	4.5	R22	6900ZZ	6	22	20											
60		57.3	56.53	52	61		6901ZZ	8	28	26	3.5	R28	6901	6	24	22																						
70	66.85	66.08	58	71	6900ZZ	6												22										20	4.5	R22	6900ZZ	6	22	20				
72	68.75	67.99	59	73																															6901ZZ	8	28	26
80	76.39	75.63	60	80													6900ZZ		6	22	20	4.5	R22	6900ZZ	6	22	20											
90	85.94	85.18	70	90			6901ZZ	8	28	26	3.5	R28	6901	6	24	22																						
100	95.49	94.73	80	100	6900ZZ	6												22										20	4.5	R22	6900ZZ	6	22	20				
20	3GT-15 A=7 W=11	Z (Sides)	5	19.1																															18.34	14.5	22.6	685ZZ
22				21.01													20.25		15	25	695ZZ	4	13	11.4	3.5	R13	695ZZ								4	13	11.4	
24		22.92		22.16			18	26	696ZZ	5	15	13.4	5	R15	696ZZ	5	15		13.4																			
25		23.87		23.11	18	27	698ZZ	6										19		17	4.5	R19	698ZZ	6	19	17												
26		24.83	24.07	18	28	6900ZZ																					6	22	20	4.5	R22	6900ZZ	6	22	20			
28		26.74	25.98	21	30																															6901ZZ	8	28
30		28.65	27.89	22.5	32				6900ZZ	6	22	20	4.5	R22	6900ZZ	6	22		20																			
32		30.56	29.8	24	35		6901ZZ	8										28		26	3.5	R28	6901	6	24	22												
34		32.47	31.71	26	36	6900ZZ																					6	22	20	4.5	R22	6900ZZ	6	22	20			
35		33.42	32.66	28	37																															6901ZZ	8	28
36		34.38	33.62	29	38				6900ZZ	6	22	20	4.5	R22	6900ZZ	6	22		20																			
38		36.29	35.52	31.6	40		6901ZZ	8										28		26	3.5	R28	6901	6	24	22												
40		38.2	37.44	33.2	42	6900ZZ																					6	22	20	4.5	R22	69						