

Pressure angle 20°

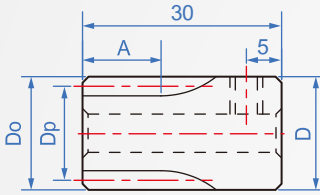
M1 module

- GE** The standard gear (bar) does not have heat treatment, if heat treatment is required ~ can be specified (GH series).
- GH** The surface of the tooth part is treated with high frequency, the hardness is 43~45 degrees, and the strength and wear resistance will be better.
- GS** Ghana also provides SUS303 material, which has good rust resistance in high humidity environment.
 - ❗ SUS have no finish, just provide material [GS].

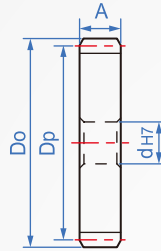
	Material	Accuracy class	Teeth finish
GE	S45C Carbon steel	JIS 4 (DIN8e25)	Milling
GH	S45C + Heat Treatment		
GS	SUS303		



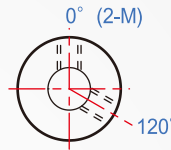
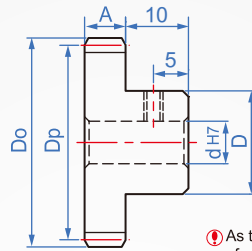
K Type



A Type



B Type



❗ As the hole is P shape, the size of screw thread is referred the following table data.

How to order

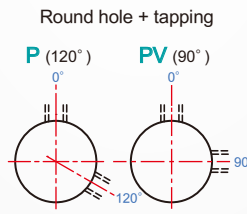
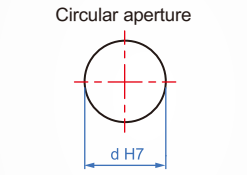


Choose material & surface treatment

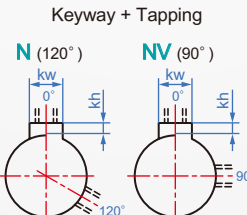
SUS303.....	GS
S45C.....	GE
S45C+heat treatment.....	GH
S45C+blackened.....	TB
S45C+Hard chrome plating.....	TC
S45C+electroless nickel.....	TN

Inventory: fast delivery, low price
Type B tooth width 10 is in stock (with minimum hole diameter/no tapping)

Unit : mm									
1	2	3	4						
Number of teeth	Module	A	Shape	Hole shape	Aperture d Processing min.	D	Number of teeth	Dp	Do
15	M1	10	K (Only suitable for P hole type)	Circular aperture	6~	17	15	15	17
16							16	16	18
17							17	17	19
18							18	18	20
19							19	19	21
20							20	20	22
21							21	21	23
22							22	22	24
23							23	23	25
24							24	24	26
25							25	25	27
26							26	26	28
27							27	27	29
28							28	28	30
29							29	29	31
30							30	30	32
31							31	31	33
32							32	32	34
33							33	33	35
34							34	34	36
35							35	35	37
36							36	36	38
37							37	37	39
38							38	38	40
39							39	39	41
40							40	40	42
41							41	41	43
42							42	42	44
43							43	43	45
44							44	44	46
45							45	45	47
46							46	46	48
47							47	47	49
48							48	48	50
49							49	49	51
50							50	50	52
55							55	55	57
60							60	60	62
65							65	65	67
70							70	70	72
75							75	75	77
80							80	80	82
85							85	85	87
90							90	90	92
100							100	100	102



Axis aperture	Tapping
4~5	M3
6~12	M4
13~30	M5



Axis aperture	kw(Js9)	kh
8~10	3	1.4
NK10	4	1.8
11~12	4	1.8
13~17	5	2.3
18~22	6	2.8
23~30	8	3.3