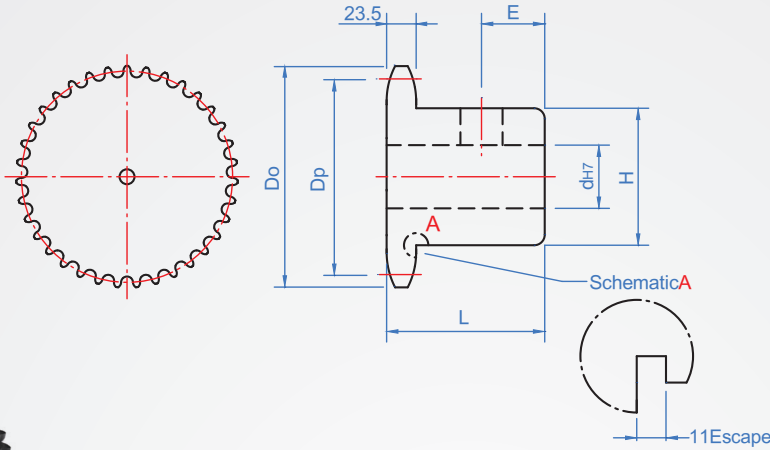


Pitch : 38.1mm

RS120B



Note : 9 teeth have the part marked with * , and the wheel shell has the escape groove of processing 11.

Material	surface treatment
S45C (Tip high frequency)	—
	Black
	Electroless nickel

* Attached to the socket set screws

How to order

RS120B - 18 - N30 -

TYPE Number of teeth Hole type

Select surface treatment

No processing.....

dye Black..... TB

Electroless nickel..... TN

Copyright © CHENA INDUSTRIAL CO.,LTD ALL RIGHTS RESERVED.

1		2									unit : mm	
Number of teeth	Dp	Do	Hole shap	dH7	H	L	E	Number of teeth	Weight (kg)			
9*	111.4	127	Keyway + Tapping	25 ~ 35	88	65	15	9	2.35			
10	123.3	140						10	3.17			
11	135.24	153						11	4.05			
12	147.21	165			12			4.8				
13	159.2	177			13			5.33				
14	171.22	190			14			6.27				
15	183.25	202		25 ~ 40	107	15	7.6					
16	195.29	214				16	8.46					
17	207.35	227				17	9.15					
18	219.41	239			18	9.9						
19	231.48	251			19	10.7						
20	243.55	263			20	12.1						
21	255.63	276		25 ~ 50	117	70	20	21	13			
22	267.72	288						22	13.8			
23	279.8	300						23	14.7			
24	291.9	312			24			15.7				
25	303.99	324			25			16.7				
26	316.09	337			25 ~ 55			127	26	17.8		
27	328.19	349	27	18.9								
28	340.29	361	28	21.5								
29	352.39	373	29	23.1								
30	364.50	385	30	24								

Chain slot New JIS_B_1301			
Axis aperture	kw(Js9)	kh	Tapping
23 ~ 30	8	3.3	M8
31 ~ 38	10	3.3	
39 ~ 44	12	3.3	
45 ~ 50	14	3.8	M10
51 ~ 58	16	4.3	