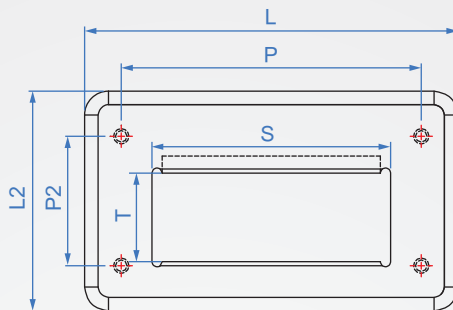


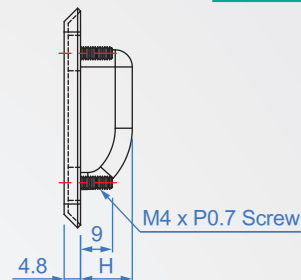
Infix handle

HA960

Hide Screw



Screw type



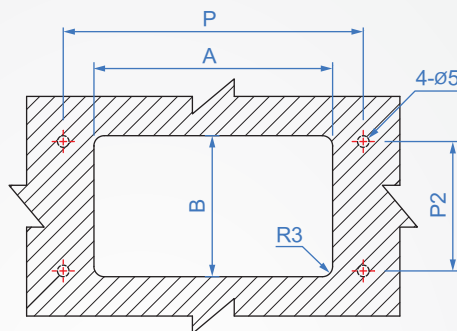
Material

SUS304

Finish

Hair-line

■ Opening size



Features

- Stainless steel (SUS304), Vibration ground and Stain Polishing.
- Outward appearance lofty artistic.
- A good R construction on hold portion of the pocket pull, feel free and easy when hold it.

How to order

HA960 - 76
 TYPE P

unit:mm

P	P2	L	L2	S	T	A	B	H	MAX.panel T	Load Capacity(kg)	Weight(g)
76	32	94	60	60	25	63	43	13	600x300	50	75
88	38	109	63	70	25	73	42	13	1000x500		95
98	48	117	67	78	25	80	50	14	800x400		115
110	65	138	88	96	36	99	64	21	1800x700		170

Che Na

886-2688-3177

info@chena.com.tw

 886-22688-3188
 886-2688-3881~3

 No.21, Guangrong St. Shulin Dist.,
 New Taipei City 238 Taiwan (R.O.C.)