

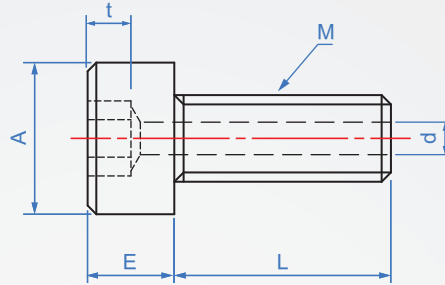
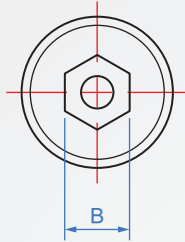
Hex Socket Head Cap Screw

JS712

Through Hole

characteristic :

Through hole screws are suitable for exhaust and gas filling applications.
Such as semiconductor manufacturing, FPD flat panel display manufacturing,
etc. vacuum suction equipment.



Material

SUS304

Strength
distinction

A2-70

How to order

JS712 - M4 - 6

TYPE M L

Unit : mm

M	Pitch	L										A	B	d	E	t	PCS/PKG
M3	0.5	6	8	10	12	16						5.5	2.5	1.2	3	1.3	20
M4	0.7	6	8	10	12	15	20	25				7	3	1.5	4	2	
M5	0.8		8	10	12	15	20	25	30			8.5	4	1.5	5	2.5	10
M6	1.0		8	10	12	15	20	25	30			10	5	2	6	3	
M8	1.25				12	15	20	25	30	35	40	13	6	2	8	4	5
M10	1.5					15	20	25	30	35	40	16	8	3	10	5	

Units for the package get more preferential.