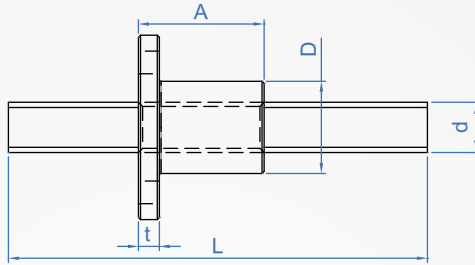
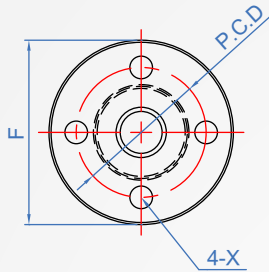


Nut general type

WF272

Shaft end not machined



threaded rod	nut	Thread direction
S45C	BrassCu	right
SUS303		

How to order

WF272 - 2505 - 1000 -

TYPE Shaft diameter lead L

Material selection

 S45C.....

 SUS303..... **SUS**

■ Trapezoidal screw - with round flange nut (1m)

No.	d	Lead	L	Shaft quality (g/m)	Nut - General type					
					A	D	F	PCD	XThrough hole	t
1002	10	2	Fixed length 1000 (1 meter)	500	24	20	36	26	4.3	5
1202	12			700	30	22	44	31		
1403	14	3		900	35	28	51	38	5.4	
1603	16			1200						
2004	20	4		1900	40	32	56	42	6.6	6
2505	25	5		2800	50	36	61	47		
3206	32	6		5000	56	44	76	58	9	7

The finished shaft end can be processed according to customer drawings

Copyright © CHENA INDUSTRIAL CO., LTD ALL RIGHTS RESERVED.