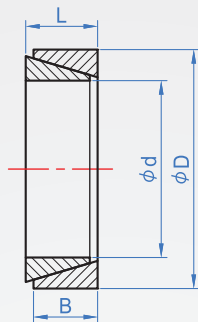
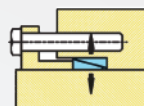


Cyclic Type LP456



Installation example



N : When use 1~4 set Cyclic, before tighten the min. distance(mm).

Material

S45C

How to order

LP456 - 12
 TYPE d

Unit : mm

d	D	B	L	N				Allowable torque Nm	Axial thrust KN	Surface pressure Mpa	Quality (g)	
				1 set	2 set	3 set	4 set					
6	9	3.7	4.5	2.5	2.5	3	4	2	0.8	115	1.1	
8	11							5	1.52		1.5	
10	13							10	2		1.9	
12	15							11		2.2		
13	16							13	110	2.3		
14	18	5.3	6.3	3	4	4	5	22	3	90	4.9	
15	19							25			5.3	
16	20							27			5.5	
17	21							30			6	
18	22							32			6.2	
20	25							44	8.2			
22	26							58	4		8	
24	28							68			6	100
25	30							75	10			
28	32							90	9.2			
30	35	100	7	12								