

## Toothed idler DU300 T5

Belt Width(mm)	10	15	20	25
Common size	A=11 W=16	A=17 W=22	A=22 W=27	A=27 W=32

Main Part	Flang	Finish	Code
aluminum alloy	aluminum	Clear anodizing	AS
		Black anodized	AB
		Electroless nickel	AK
		Hard anodized	AN
S45C	Iron	Byed black	TB
		Electroless Nickel	TN

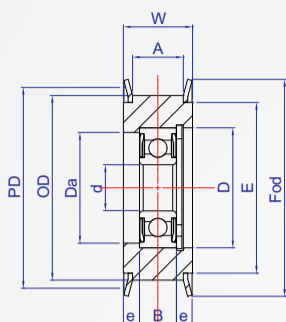
**Y** Single bearing Retaining ring

**Z** Two bearing Retaining ring

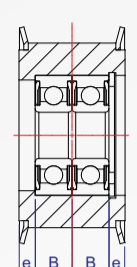
Center bearing



Two side bearing



Single bearing



Two bearing

### How to order



- Choose a finish
- Aluminum + White Anodized..... **AS**
  - Aluminum + Black Anodized..... **AB**
  - Aluminum + hardened anode..... **AK**
  - Aluminum + Electroless Nickel..... **AN**
  - S45C+ dyed black..... **TB**
  - S45C+ Electroless Nickel..... **TN**

Kind	Number of teeth	Tooth width	d	P.D	O.D	E	Fod	Y Single bearing						Z Two Bearing					
								No.	B	D	Da Max	e	C ring	No.	B	D	Da Max		
15	T5-10 A=11 W=16	Y (Centered)	6	23.87	23.05	18	28	696ZZ	2pc	5	15	13.4	3	R15	606ZZ	2pc	6	17	15
16				25.46	24.6	20	32	606ZZ	1pc	6	17	15	5	R17					
18		Z (Sides)	8	28.65	27.8	22.5	32	698ZZ	2pc	6	19	17	5	R19	698ZZ	6	19	17	
20				31.83	31	24	35												628ZZ
22				35.01	34.25	28	40	6000ZZ	2pc	8	26	24	4	R26	6900ZZ	6	22	20	
24				38.2	37.4	30	42												6200ZZ
25				39.79	39	30	45	6200ZZ	2pc	9	30	25	3.5	R30	6200ZZ	9	30	25	
26				41.38	40.6	34	47												6200ZZ
28				44.56	43.75	37	49	6201ZZ	1pc	10	32	27	3	R32	6001ZZ	2pc	8	28	26
30				47.75	46.95	40	52												
32				50.93	50.1	40	55	6202ZZ	1pc	11	35	30	5.5	R35	6002ZZ	9	32	30	
34				54.11	53.25	44	62												6202ZZ
35		55.7	54.85	44	62	6302ZZ	1pc	13	42	36	7	R42	6202ZZ	11	35	30			
36		57.3	56.45	45	65												6302ZZ	13	42
38		60.48	59.65	52.5	67.5	6302ZZ	1pc	13	42	36	7	R42	6202ZZ	11	35	30			
40		63.66	62.85	52.5	67.5												6302ZZ	13	42
42	66.85	66	59	73	6302ZZ	1pc	13	42	36	7	R42	6202ZZ	11	35	30				
44	70.03	69.2	59	73												6302ZZ	13	42	36

\* 10mm: (15\*teeth) have two bearings °  
 \* 15mm: (18\*~25\*teeth) have two bearings °  
 \* 20mm: (18\*~35\*teeth) have two bearings °  
 \* 25mm: (18\*~44\*teeth) have two bearings °