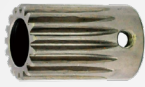


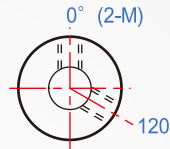
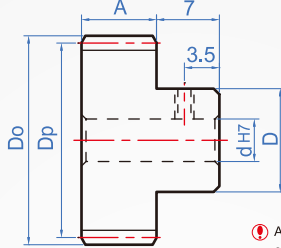
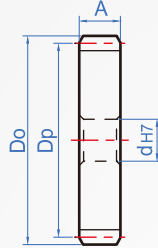
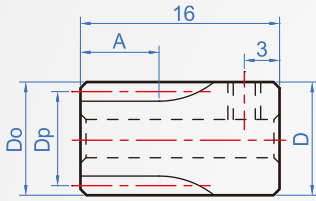
Pressure angle 20°  
**M0.8** module



K Type

A Type

B Type

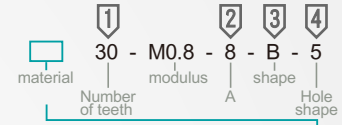


As the hole is P shape, the size of screw thread is referred the following table data.

- GS CheNa also provides SUS303 material, in a high humidity environment can have a good antirust.
- GE Standard gear (Rack) did not do heat treatment.

Material	Accuracy class	Teeth finish
GU Copper CU	JIS 4 (DIN8e25)	Milling
GS SU303		
GE S45C Carbon steel		

### How to order



Choose material & surface treatment

brass.....	GU
SUS303.....	GS
S45C.....	GE
S45C+heat treatment.....	GH
S45C+blackened.....	TB
S45C+Hard chrome plating.....	TC
S45C+electroless nickel.....	TN

Number of teeth	Module	A	Shape	Hole shape	Aperture d Processing min.	D	Number of teeth	Dp	Do									
12	M0.8	8	K (Only suitable for P hole type)	Circular aperture 	3~	11.2	12	9.6	11.2									
13						12	10.4	12										
14						12.8	11.2	12.8										
15						13.6	12	13.6										
16						14.4	12.8	14.4										
17						15.2	13.6	15.2										
18						16	14.4	16										
19						A (For round holes only)	Round hole + tapping P (120°) PV (90°) 	Axis aperture Tapping 4~5 M3 6~12 M4	4~	12	19	15.2	16.8					
20										20	16	17.6						
21										21	16.8	18.4						
22										22	17.6	19.2						
23										23	18.4	20						
24			24	19.2	20.8													
25			25	20	21.6													
26			26	20.8	22.4													
27			27	21.6	23.2													
28			28	22.4	24													
29			29	23.2	24.8													
30			30	24	25.6													
32			B	Keyway + Tapping N (120°) NV (90°) 	Axis aperture kw(Js9) kh 8~10 3 1.4 NK10 4 1.8 11~12 4 1.8 13~17 5 2.3					5~	18	32	25.6	27.2				
34											34	27.2	28.8					
35											35	28	29.6					
36											36	28.8	30.4					
38											38	30.4	32					
40											6~				20	35	28	29.6
42															42	33.6	35.2	
44															44	35.2	36.8	
45															45	36	37.6	
46															46	36.8	38.4	
48															48	38.4	40	
50															28			
52			52	41.6	43.2													
54			54	43.2	44.8													
55			55	44	45.6													
56			56	44.8	46.4													
58			58	46.4	48													
60	60	48	49.6															
70	70	56	57.6															
80	80	64	65.6															
90	90	72	73.6															

Copyright © CHENA INDUSTRIAL CO.,LTD ALL Rights Reserved.