

Pressure angle 20°

M0.5 module



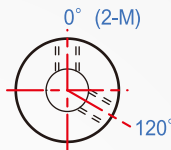
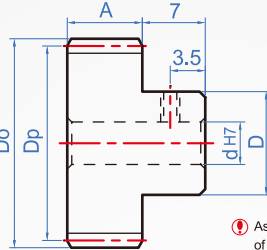
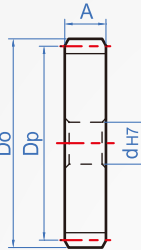
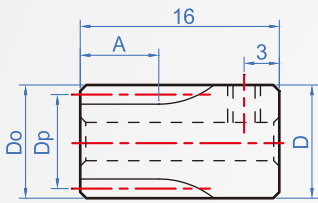
K Type



A Type



B Type

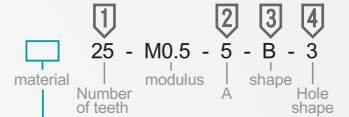


⚠ As the hole is P shape, the size of screw thread is referred the following table data.

- GS CheNa also provides SUS303 material, in a high humidity environment can have a good antirust.
- GE Standard gear (Rack) did not do heat treatment.

Material	Accuracy class	Teeth finish
GU Copper CU	JIS 4 (DIN8e25)	Milling
GS SU303		
GE S45C Carbon steel		

How to order



Choose material & surface treatment

brass.....	GU
SUS303.....	GS
S45C.....	GE
S45C+heat treatment.....	GH
S45C+blackened.....	TB
S45C+Hard chrome plating.....	TC
S45C+electroless nickel.....	TN

unit:mm														
1	2	3	4											
Number of teeth	Modulus	Tooth surface width A	Shape	Hole shape	Mini. aperture d	Wheel hub D	Number of teeth	Pitch diameter Dp	Tooth top Do					
15	M0.5	5	K (Only suitable for P hole type)	Circular aperture 	3~	8.5	15	7.5	8.5					
16						9	8	9						
17						9.5	8.5	9.5						
18						10	9	10						
19						10.5	9.5	10.5						
20						11	10	11						
21						11.5	10.5	11.5						
22						12	11	12						
23						12.5	11.5	12.5						
24						13	12	13						
25						M0.5	5	A (For round holes only)	Round hole + tapping P (120°) PV (90°) 	4~	10	25	12.5	13.5
26											26	13	14	
27	27	13.5	14.5											
28	28	14	15											
29	29	14.5	15.5											
30	30	15	16											
32	M0.5	5	B	Keyway + Tapping N (120°) NV (90°) 	5~						13	32	16	17
34											14	34	17	18
35											15	35	17.5	18.5
36											16	36	18	19
38											16	38	19	20
40											16	40	20	21
42						M0.5	5	B	Keyway + Tapping N (120°) NV (90°) 	5~	18	42	21	22
44											44	22	23	
45											45	22.5	23.5	
46											46	23	24	
48											48	24	25	
50											50	25	26	
52	52	26	27											
54	54	27	28											
55	55	27.5	28.5											
56	56	28	29											
58	58	29	30											
60	M0.5	5	B	Keyway + Tapping N (120°) NV (90°) 	6~						20	60	30	31
70						70	35	36						
80						80	40	41						
90						90	45	46						
100						100	50	51						
110						110	55	56						
120						120	60	61						

Copyright © CHENA INDUSTRIAL CO.,LTD ALL RIGHTS RESERVED.