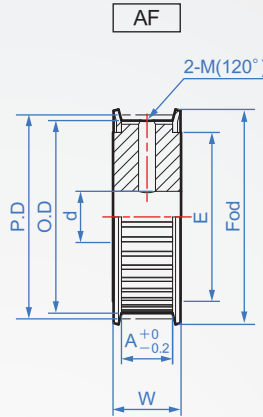
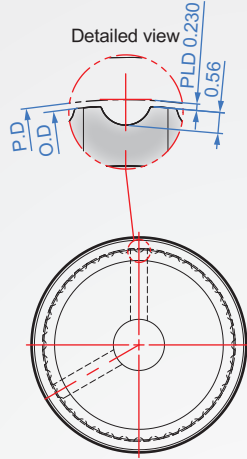
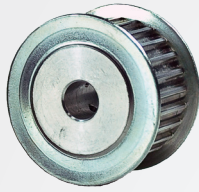


Pitch : 1.5mm  
**1.5GT**



Belt width	1.5	2	2.5	3	4
Common size	A=2.2 W=5.5	A=2.7 W=6	A=3.2 W=6.5	A=4 W=7.3	A=5 W=8.3

**How to order**

1 18 - 2 1.5GT-3 - 3 AF - 4 H3  
Number of teeth      TYPE width      Shape      Hole shape

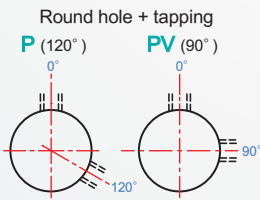
Choose surface treatment

AS.....Clear anode  
AB.....Black anode  
AN.....Electroless nickel  
AK.....Hardened anode

**Material** : Aluminum A6061+ anodized.  
Please contact us if you need iron material.

Unit : mm									
1	2	3	4						
Number of teeth	TYPE width	Shape	Hole shape	Aperture d	P.D.	O.D.	Number of teeth	E	Fod
				Processing min.					
18				3~	8.59	8.13	18	6.5	13.5
19					9.07	8.61	19		
20					9.55	9.09	20		
21					10.03	9.57	21		
22					10.5	10.04	22		
23					10.98	10.52	23		
24					11.46	11	24		
25				11.94	11.48	25			
26				4~	12.41	11.95	26	10.4	18
27					12.89	12.43	27		
28					13.37	12.91	28		
29	1.5GT-1.5				13.85	13.39	29		
30					14.32	13.86	30		
31	1.5GT-2				14.8	14.34	31		
32					15.28	14.82	32		
33				5~	15.76	15.3	33	13.5	19
34	1.5GT-2.5	AF			16.23	15.77	34		
35					16.71	16.25	35		
36					17.19	16.73	36		
37	1.5GT-3				17.67	17.21	37		
38					18.14	17.68	38		
39					18.62	18.16	39		
40	1.5GT-4			19.1	18.64	40			
41				6~	19.58	19.12	41	16	23
42					20.05	19.59	42		
43					20.53	20.07	43		
44					21.01	20.55	44		
45					21.49	21.03	45		
46					21.96	21.5	46		
47					22.44	21.98	47		
48					22.92	22.46	48		
49					23.4	22.94	49		
50					23.87	23.41	50		

**H** Round hole



Axis aperture	Tapping
3~5	M3
6~22	M4

Copyright © CHENA INDUSTRIAL CO., LTD ALL RIGHTS RESERVED.