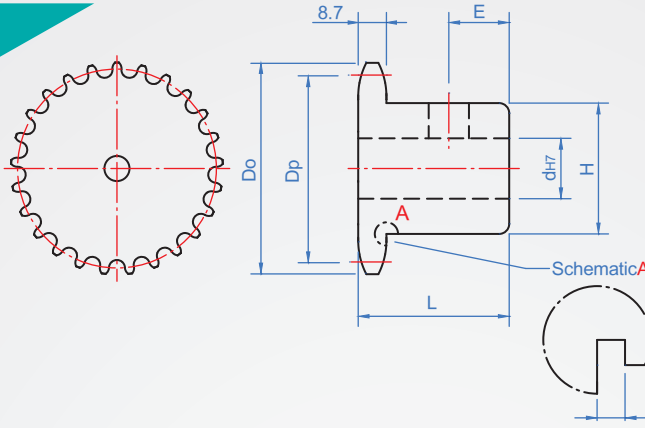


Pitch : 15.875 mm

## RS50B



Note : 8~13 teeth have the part marked with \*, and the wheel shell has the escape groove of processing 5.2

Material	surface treatment
S45C (Tip high frequency)	—
	Black
	Electroless nickel

\* Attached to the socket set screws

### How to order

RS50B - 18 - N9 -

TYPE    Number of teeth    Hole type

Select surface treatment

No processing.....  Blank

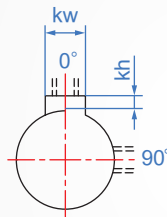
dye Black.....  TB

Electroless nickel.....  TN

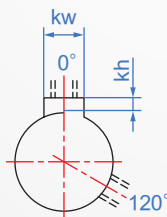
1		2							unit : mm			
Number of teeth	Dp	Do	Hole shape	dh7	H	L	E	Number of teeth	Weight (kg)			
8*	41.48	47	Keyway + Tapping	9 ~ 15	29	30	10	8	0.19			
9*	46.42	53			34			9	0.19			
10*	51.37	58			40			10	0.25			
11*	56.35	64			46			11	0.32			
12*	61.34	69			51			12	0.4			
13*	66.34	74			55			13	0.45			
14	71.34	79			55			14	0.51			
15	76.35	84			60			15	0.61			
16	81.37	89			12 ~ 25			65	35	12	16	0.71
17	86.39	94									17	0.83
18	91.42	100									18	1.03
19	96.45	105									19	1.09
20	101.48	110									20	1.14
21	106.51	115									21	1.2
22	111.55	120									22	1.24
23	116.58	125	23	1.3								
24	121.62	130	24	1.37								
25	126.66	135	25	1.44								
26	131.70	140	13 ~ 25	70	40	15	26	1.5				
27	136.74	145					27	1.58				
28	141.79	150					28	1.65				
29	146.83	155					29	1.7				
30	151.87	161					30	1.81				
31	156.92	166					31	1.8				
32	161.96	171					32	1.98				
33	167.01	176					16 ~ 30	70	40	15	33	2
34	172.05	181									34	2.16
35	177.10	186									35	2.25
36	182.14	191	36	2.79								
37	187.19	196	37	2.8								
38	192.24	201	75	38	2.99							
39	197.29	206		39	3							
40	202.33	211		40	3.21							
41	207.38	216		41	3.2							
42	212.43	221		42	3.43							
43	217.48	226	20 ~ 40	78	40	15	43	3.4				
44	222.53	231					44	3.66				
45	227.58	237					45	3.78				
46	232.63	242					46	4				
48	242.73	252					48	4				
50	252.83	262					50	4.43				

Keyway + Tapping

NV Tapping 90°



N Tapping 120°



#### Chain slot New JIS\_B\_1301

Axis aperture	kw(Js9)	kh	Tapping
8 ~ 10	3	1.4	M4
NK10	4	1.8	M5
11 ~ 12	4	1.8	
13 ~ 17	5	2.3	M6
18 ~ 22	6	2.8	
23 ~ 30	8	3.3	M8
31 ~ 38	10	3.3	
39 ~ 44	12	3.3	

Copyright © CHENA INDUSTRIAL CO.,LTD ALL RIGHTS RESERVED.