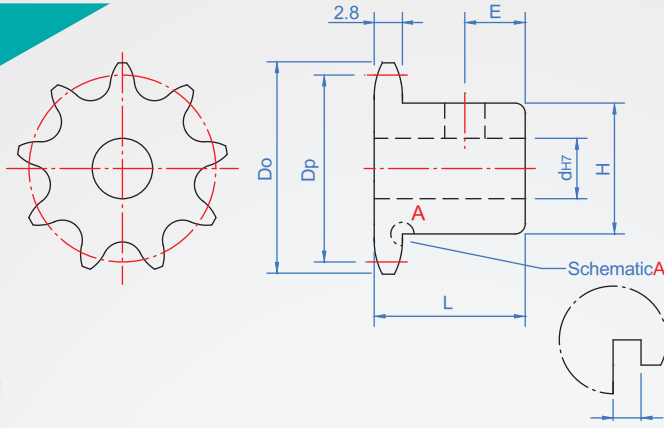


Pitch : 6.35 mm
RS25B



Note : 9~13 teeth have the part marked with *, and the wheel shell has the escape groove of processing 1.2.

Material	surface treatment
S45C (Tip high frequency)	—
	Black
	Electroless nickel

* Attached to the socket set screws

How to order

RS25B - 18 - N8 -

TYPE Number of teeth Hole type

Select surface treatment

No processing.....

dye Black..... TB

Electroless nickel..... TN

1		2						unit : mm	
Number of teeth	Dp	Do	Hole shape	dh7	H	L	E	Number of teeth	Weight (kg)
9*	18.56	21	Keyway + Tapping NV Tapping 90° 	6~7	14	15	6	9	0.014
10*	20.55	23		6~9	16			10	0.018
11*	22.54	25		6~10	18			11	0.023
12*	24.53	28		6~12	20			12	0.030
13*	26.53	30			22			13	0.048
14*	28.54	32		6~14	24			14	0.051
15	30.54	34			25	15	0.053		
16	32.55	36			28	16	0.077		
17	34.56	38			28	17	0.079		
18	36.57	40			30	18	0.081		
19	38.58	42			35	19	0.084		
20	40.59	44		N Tapping 120° 	8~16	25	18	7	20
21	42.61	46			28	21			0.119
22	44.62	48	8~20		30	22			0.121
23	46.63	50			35	23			0.124
24	48.65	52			40	24			0.127
25	50.66	54			45	25			0.165
26	52.68	56			50	26	0.208		
27	54.70	58			55	27	0.212		
28	56.71	60			60	28	0.216		
29	58.73	62			65	29	0.324		
30	60.75	64			70	30	0.328		
31	62.77	66			75	31	0.328		
32	64.78	68		80	32	0.396			
33	66.80	70		85	33	0.401			
34	68.82	72		90	34	0.405			
35	70.84	74		95	35	0.410			
36	72.86	76		100	36	0.415			
37	74.88	78		105	37	0.421			
38	76.90	80		110	38	0.426			
39	78.91	82		115	39	0.431			
40	80.93	84		120	40	0.437			
41	82.95	87		125	41	0.442			
42	84.97	89		130	42	0.448			
43	86.99	91		135	43	0.454			
44	88.01	93		140	44	0.460			
45	91.03	95		145	45	0.466			
46	93.05	97		150	46	0.473			
47	95.07	99		155	47	0.479			
48	97.09	101		160	48	0.486			
50	101.15	105		165	50	0.500			

Chain slot New JIS_B_1301

Axis aperture	kw(Js9)	kh	Tapping
8 ~ 10	3	1.4	M4
NK10	4	1.8	M5
11 ~ 12	4	1.8	
13 ~ 17	5	2.3	M6
18 ~ 22	6	2.8	
23 ~ 30	8	3.3	M8
31 ~ 38	10	3.3	
39 ~ 44	12	3.8	

Copyright © CHENA INDUSTRIAL CO.,LTD ALL RIGHTS RESERVED.