

Resin Coupling-Jaw

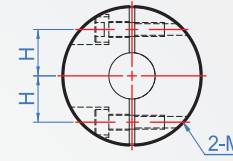
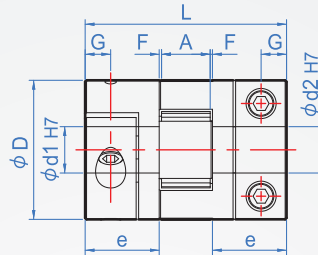
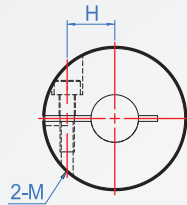
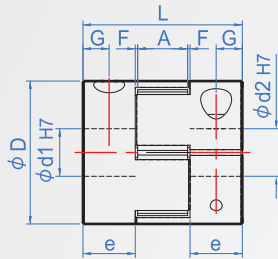
CH435 Clamp type



Main part	Cushioning material	Hex socket head cap screws
A6061 (Clear anodizing)	Red PU (Hardness 95SH A)	SCM435 (Black oxide)

O.D. $\phi 20 \sim \phi 30$

O.D. $\phi 40 \sim \phi 65$



How to order

CH435 - 20 - 6x8
 | | |
 TYPE D d1xd2

Unit : mm

D	Inner hole designation d1 \ d2 min. max.	L	G	A	F	e	M	H	General torque (N · m)	Max. torque (N · m)	Max. return speed (rpm/min)	Moment of inertia (kg · m ²)	Allow axial displacement (mm)	Allow eccentricity (mm)	Allowable declination (°)	Weight (g)
20	5 ~ 8	30	5	9	0.5	10	M2.5	6.5	5	10	14000	1.0x10 ⁻⁶	±0.4	0.1	1	19
30	6 ~ 14	34	5.5	11		11	M4	10	12.5	25	12000	6.1x10 ⁻⁶	±0.5			50
40	10 ~ 19	66	8.5	14	1	25	M5	14	17	34	10000	3.8x10 ⁻⁵	±0.6			190
55	15 ~ 25	78	10.5	16		30	M6	20	60	120	7000	1.5x10 ⁻⁴	±0.7			412
65	15 ~ 35	90	13	17.5	1.25	35	M8	24	160	320	5900	3.8x10 ⁻⁴	±0.75			560
80	15 ~ 45	114	15	21	1.5	45	M8	31	325	650	4800	1.1x10 ⁻³	±0.8			1400
95	20 ~ 55	126	16	20	3	50	M10	35	450	900	3600	1.9x10 ⁻³	±1.0			1500