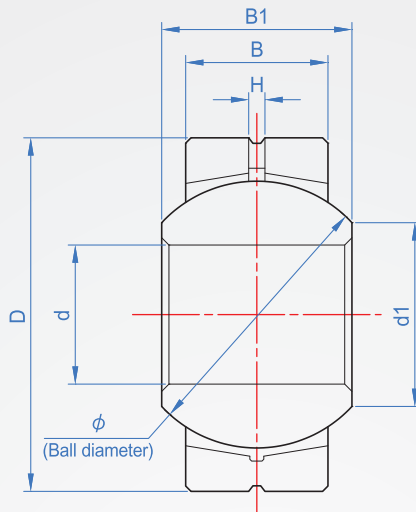
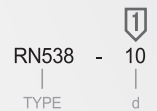


Knuckle bearing
RN538
Ring Type



Clamper	Spherical inner ring	Steel ball bushing
S35C (Chrome plated)	SUJ2-Hard plating HRC58~	Special copper alloy

How to order



d H7	Main dimensions						Ball diameter mm	Allowable tilt angle			Static load Cs (Kgf)	Quality (g)
	D	B	B1	d1	H	r		α 1	α 2	α 3		
5	16	6	8	7.7	1	0.3	11.112	8°	13°	30°	800	8.5
6	18	6.75	9	9			12.7				1000	13
8	22	9	12	10.4	1.2	0.5	15.875	14°	25°	1700	24	
10	26	10.5	14	12.9			19.05			2400	39	
12	30	12	16	15.4	1.5	0.5	22.225	13°	25°	3200	58	
14	34	13.5	19	16.9			25.4			4100	84	
16	38	15	21	19.4	2.5	2.5	28.575	9°	24°	5100	111	
18	42	16.5	23	21.9			31.75			6300	160	
20	46	18	25	24.4	2.5	2.5	34.925	15°	24°	7500	210	
22	50	20	28	25.8			38.1			9000	265	
25	56	22	31	29.6	3	3	42.862	9°	23°	11300	390	
30	66	25	37	34.8			50.4			15100	610	

※Concert with shaft

Related shaft and the support base recommends the following values.

Conditions of use	Shaft	Support base
	Inner ring rotational load	Normal load
Direction is not correct load		n6 H7
Outer ring rotational load	Normal load	h7 M7
	Direction is not correct load	k6 M7

※Clearance

Radial clearance	0.035 and below
Axial clearance	0.1 and below

※lubricating

Sealed lubricant before using. The holder have lubrication hole and sump, when necessary you can add oil through the nipple.

※Allowable tilt angle

