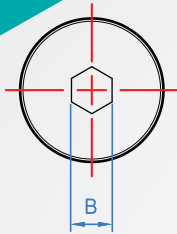
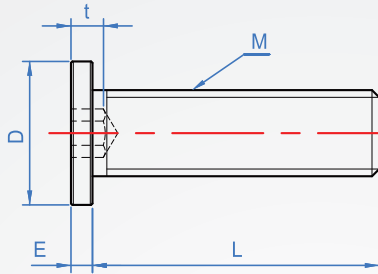


Hex socket extra low head cap screw

WA733

SCM435、SUS304 Size chart



Material	Finish	Strength distinction	Head strength distinction
SCM435 HRC32~39	Black oxide	10.9	5.8(M2~M8)
	Trivalent chromium		4.8(M10)
SUS304	-	A2-50	A2-50
Titanium	-	-	-



How to order

WA733	-	M3	-	5	-	<input type="text"/>
TYPE	M	L				
Finish chosen						
Black oxide.....						<input type="text" value="BK"/>
Trivalent chromium.....						<input type="text" value="CR"/>
SUS304.....						<input type="text" value="SUS"/>

Finish	M	Pitch Coarse teeth	L										D	E	B	t max	Max. torque N · m	
			4	5	6	8	10	12	14	16	20	25						30
BK SUS	M2	0.4	4	5	6	8	10	12	14	16			4	1.1	1.3	1.2	0.2	
	M2.5	0.45	4	5	6	8	10	12				5	1.3	1.5		0.4		
BK CR SUS	M3	0.5		5	6	8	10	12	16			6	1.3	1.5	2	1		
	M4	0.7		5	6	8	10	12	16	20		8			2	2.5	2	
	M5	0.8			6	8	10	12	16	20		9			3	3	5	
	M6	1.0			6	8	10	12	16	20	25	30	10			4		
	M8	1.25			6	8	10	12	16	20	25	30	13			4	5	10
	M10	1.5					10	12	16	20	25	30	16			5	6	18

※ Attention! If using this product with special needs and on the characteristics of strength, please stop using.
In particular, when used in the screw head bearing surface, do not use excessive force.
Tightening torque on the table is the estimated value. Important part in the use please actual test at the first.

※ The term-strength rank-signifies the screw's tensile strength of the male screw parts.

10.9

9→Indicates that the yield point or the minimum proof strength is 90% of the tensile strength.

10→ It indicates that the minimum value of nominal tensile strength 980N/m² m {100kgf/m² m }

A2-50

50→ It indicates that the minimum value of nominal tensile strength is 500N/m² m {51kgf/m² m }

A2→ The steel class is A2(Austenitic stainless steel)

※ This delicately exquisite product is designed to be thinner, smaller and more space-saving.

Che Na

FAX 886-2688-3177

info@chena.com.tw

886-22688-3188
886-2688-3881~3No.21, Guangrong St. Shulin Dist.,
New Taipei City 238 Taiwan (R.O.C.)